

Supports Coordination



Helping people lead meaningful lives

"My son has adjusted well to his 'new home.' This transition could not have taken place without your insight and encouragement."

* * *

"Thanks for helping us get a stair glide for our home. It has made life a lot easier for my family. Our Supports Coordinator also helped us obtain transportation for our son."

• * *

"I want to thank your office for everything your staff has done for my son. There is no way I could have figured out how to find or afford these services."

* * *

"Our daughter's Supports Coordinator helped her get in-home supports, a day program and transportation. She was also helpful when she had a medical crisis and a death in the family."

DELAWARE COUNTY COUNCIL

Council

Richard R. Womack
Chair

Christine A. Reuther
Vice-Chair

Dr. Monica Taylor
Elaine Paul Schaefer
Joanne Phillips

Sandra Garrison
Chief of Human Services and Community
Supports

Angelique Hiers, Director
Department of Human Services

Janet M. Dreitlein
MH/IDD Administrator

Aleasha Redden-Revell
IDD Deputy Administrator

Matthew Nicolino
ID Program Director
Supports Coordination Organization

SUPPORTS COORDINATION ORGANIZATION OF DELAWARE COUNTY HUMAN SERVICES

*Supporting individuals with intellectual
disabilities, children and adults with*



*autism, and children with developmental
disabilities, in leading meaningful lives
through choice and self-determination.*



**Delaware County Human Service Office
of Intellectual and Developmental
Disabilities**

**4990 State Rd Suite 101
Drexell Hill, PA 19026
610-713-2400**

humanservices@delcohsa.org

Delaware County Supports Coordination Organization

“Your Guide to Services & Supports”

Mission: The Delaware County Supports Coordination Organization (SCO) assists individuals with intellectual and developmental disabilities and their families to locate quality supports and services to lead safe, healthy, meaningful lives.



“Navigating a Complex System”

Families must first contact the Delaware County Administrative Entity to determine if the individual meets eligibility requirements. Contact 610-713-2330 for information.

Once it is determined that you are eligible for supports in the Intellectual and Developmental Disability system, you will meet with a Supports Coordinator to

Getting Started

David Henry: Support's Coordinator

As your Supports Coordinator, I will meet with you and your family to develop a plan and work to put that plan in place. Some of the coordinator's goals are to:

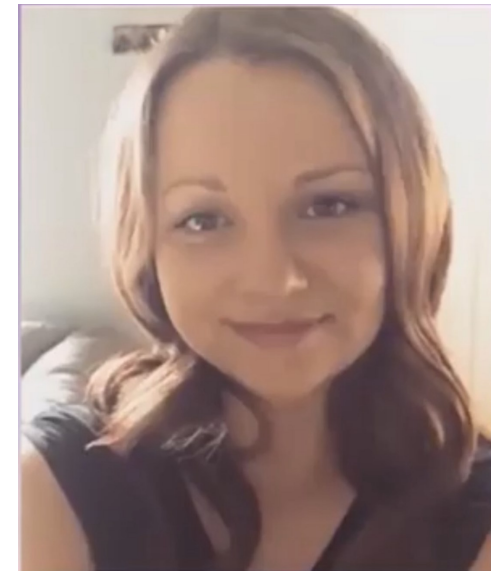
- Conduct a Prioritization of Urgency of Needs (PUNS) assessment
- Develop an Individual Service Plan (ISP) that outlines needed services
- Locate, coordinate and monitor services and supports
- Assist individuals to maximize sources of financial support
- Locate generic community supports such as gyms, clubs, recreation groups
- Monitor the services to ensure the person's ISP is being followed
- Maintain and update ISP information annually



Community Support Options

“Making Choices”
Jessica Davis: SC Supervisor

Your Delaware County Supports Coordination Team will help you and your family learn about state and local resources. There are many qualified providers to choose from and each individual/family has to decide which supports best meet their unique needs.



The Delaware County Supports Coordination Organization (SCO) focuses exclusively on and works with Delaware County residents. All Delaware County Supports Coordinators are highly trained and well versed on the resources, services and supports available to Delaware County residents. Your Delaware County Supports Coordinator is dedicated to finding the right combination of resources, services and