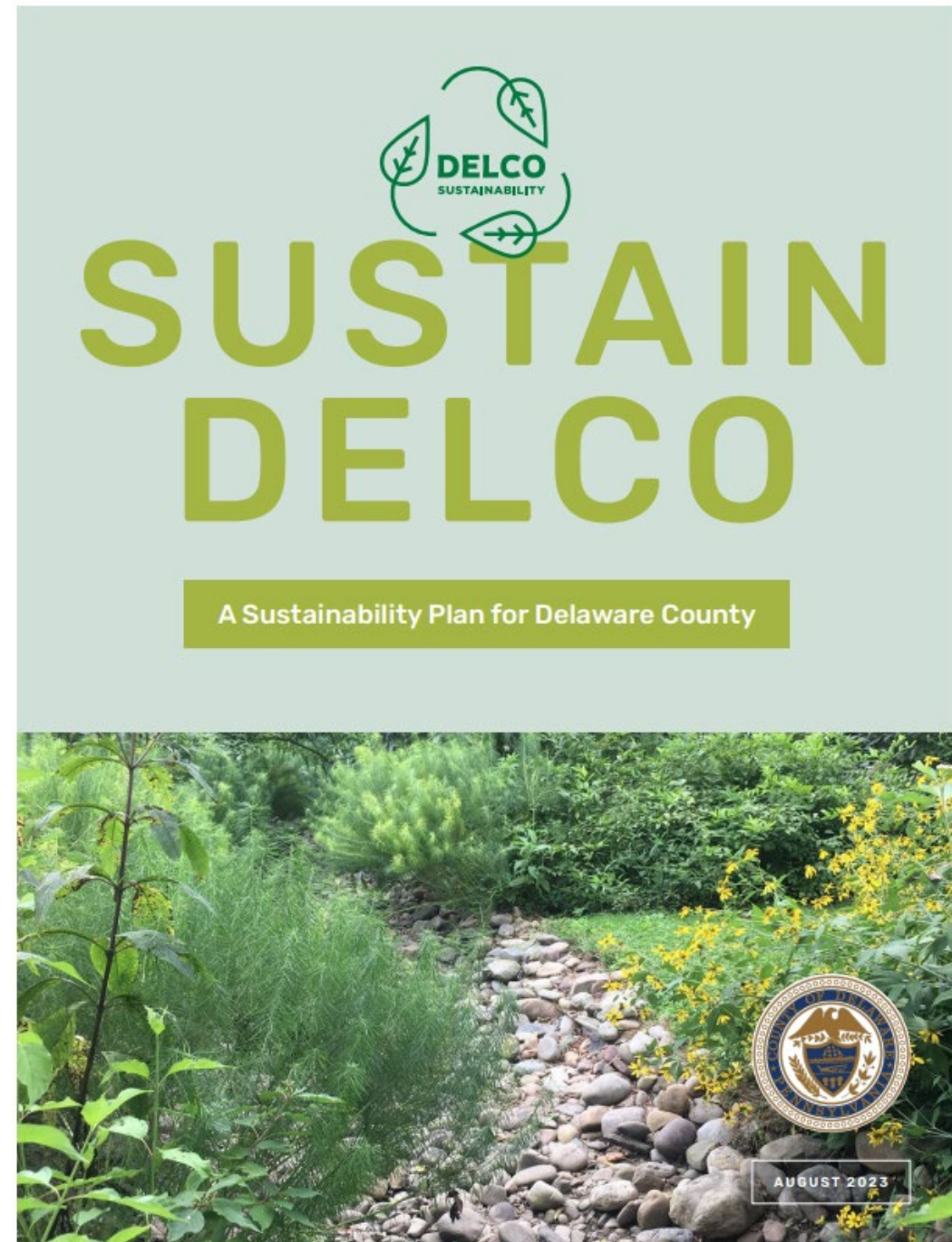


SUSTAINABILITY IN ACTION – Working to Sustain Delco in a Changing Climate

Presented by:
Rebecca Yurkovich,
Sustainability and Resilience Manager



Main Ideas

- **WHY** are we Talking About Climate Change In Delaware County?
- **OUR PLAN** - Sustain Delco: A Sustainability Plan for Delaware County
 - Recap of Plan Focus Areas, Goals, and Actions
 - Implementing the Plan – Progress to Date
- **TAKING ACTION** to Sustain Delco
- Questions

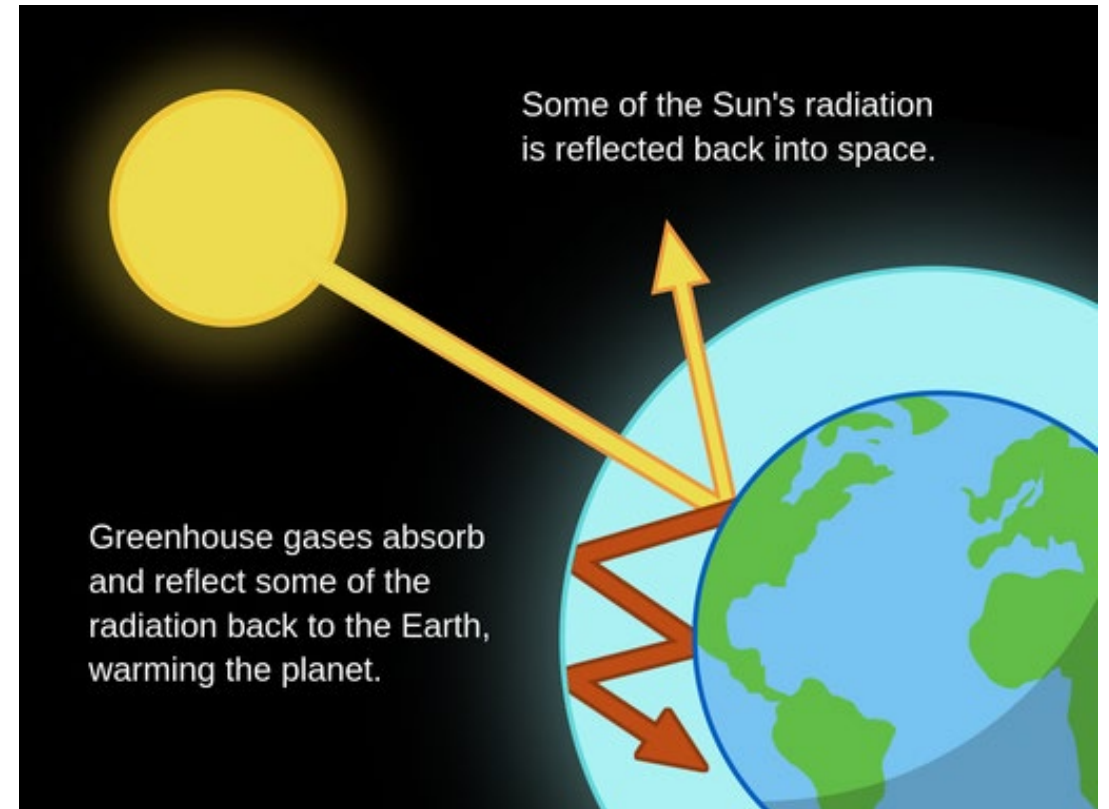


WHY?

Because Climate Change

Why does a Changing Climate Matter?

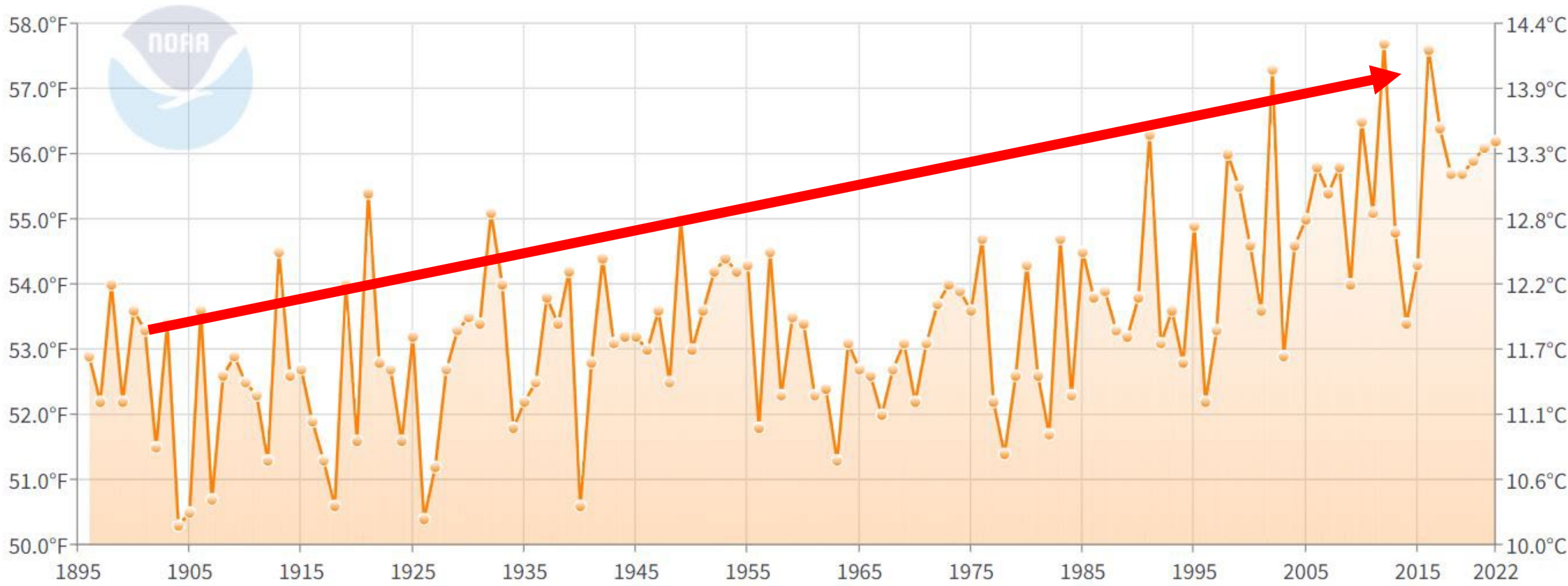
- **Long-term shifts in temperature and weather patterns**
- Some shifting is natural,
- But since the 1800's, human activities have been making the process move faster due to greenhouse gas emissions.



Average Daily Temperatures in Delaware County are on the Rise

Delaware County, Pennsylvania Average Temperature

October-September



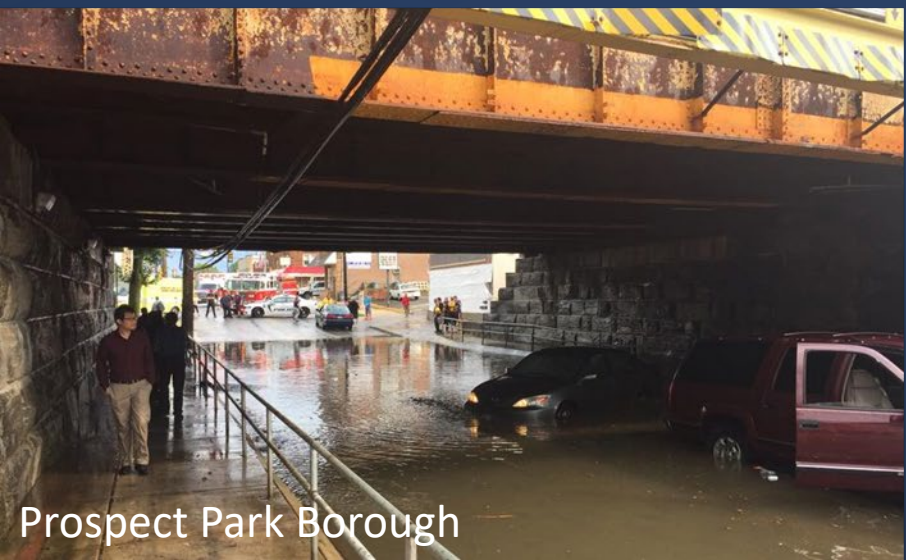
Chadds Ford Township



Radnor Township



Flood Waters Rising



Prospect Park Borough



Darby Borough

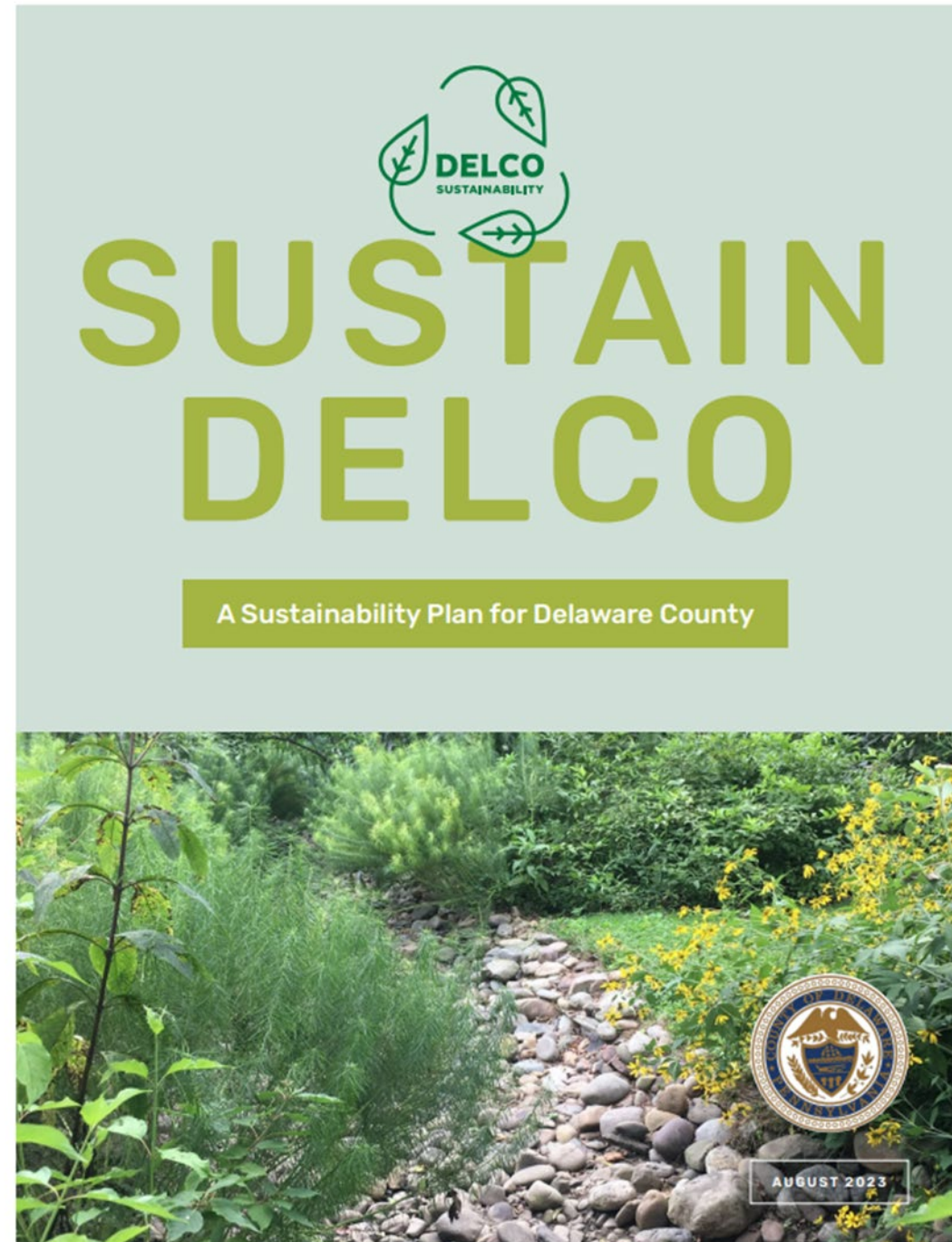


Darby Borough

OUR PLAN

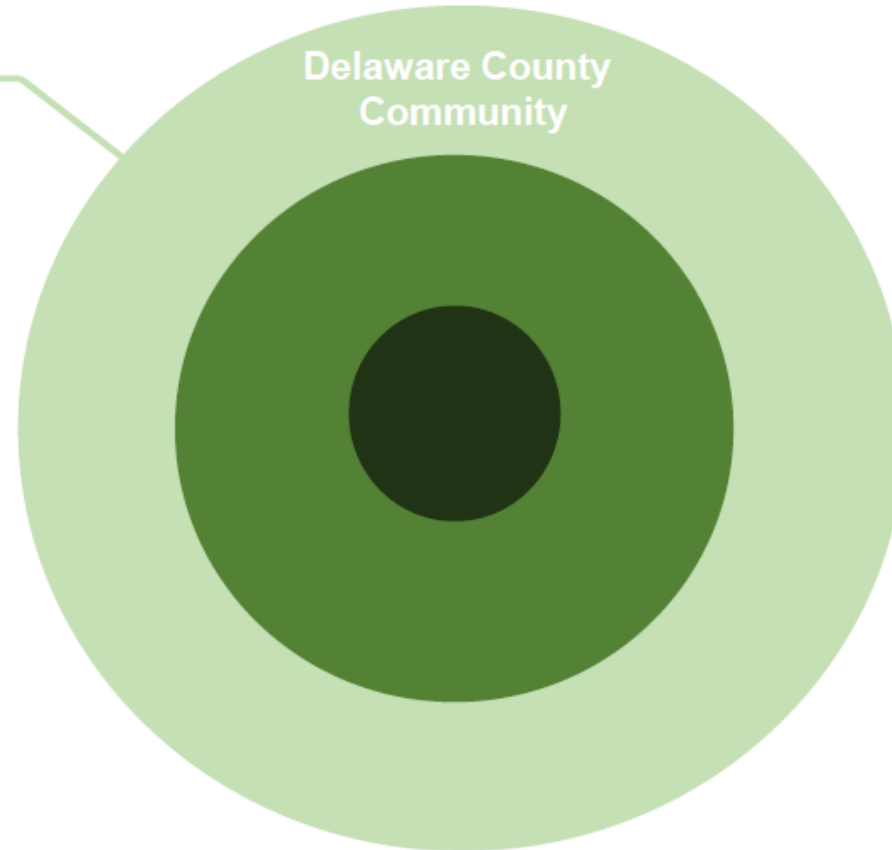
Delaware County Sustainability Plan

Focus Areas – Goals, Targets,
and Actions



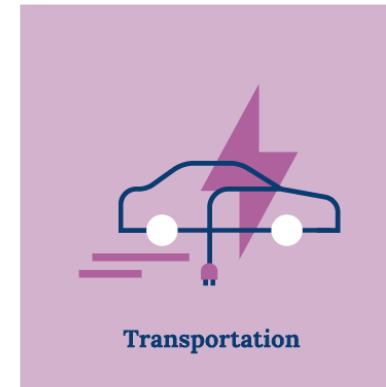
Understanding the County's Role in Sustainability

- *Educate*
 - Residents
 - Businesses
 - Industries
 - Schools
 - Colleges and Universities
 - Non-Profits



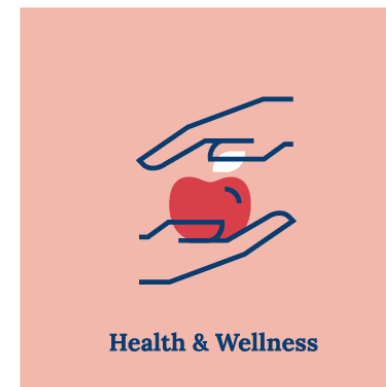
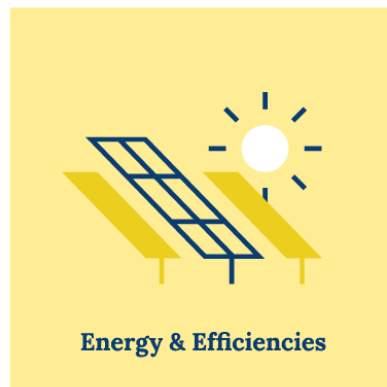
Sustainability Plan Focus Areas and Guiding Principles

ECONOMIC
SUSTAINABILITY



GOVERNANCE

EDUCATION



EQUITY,
INCLUSION, AND
JUSTICE

ACTION PLAN COMPONENTS

FOCUS AREA 04

ENERGY & EFFICIENCIES

GOAL

Reduce water and energy consumption in buildings and properties in Delaware County and transition to combustion-free renewable energy.

1

A Sustainability Plan for Delaware County 47

Climate Resiliency

FOCUS AREA 01

2

Climate Hazards
Delaware County to prepare to combat severe weather events.

Economy
To grow and diversify the green economy.

Infrastructure
To ensure infrastructure is properly constructed and maintained to withstand climate hazards through informed decisions by municipalities and residents.

TARGETS

All 40 municipalities will adopt and implement resiliency practices to adapt to, prepare for, and respond to climate hazards over the next 5 years.

Increase the number of green jobs/businesses in Delaware County by 5% over the next 5 years.

Increase awareness and understanding of resiliency infrastructure engaging all municipalities and residents over the 5 years.

3

A Sustainability Plan for Delaware County 23

4

ACTION	AGENCY	LOCATION	STATUS	IMPLEMENTATION
Reduce emissions in Delaware County. Calculate baseline emissions from energy.	DOCS	Facilities, PECC, COMPO	Short	Educational institutions, Municipalities, Non-Profits, HSA
Install energy reduction projects in buildings and secure outdoor restrooms.	Public Works	DOCS, Facilities	Medium	Educational institutions, Municipalities, Non-Profits, HSA
Equipify County buildings starting new construction and/or retrofits.	Public Works	Facilities, DOCS	Ongoing	All Groups
Conduct HVAC upgrade pilot for identifying mechanical systems in conformance with and-of-4th of existing equipment.	Public Works	Facilities, DOCS	Short	All Groups
Zero Waste				
Internal Operations - to achieve zero waste in County operations.				
Adopt Delaware County's Zero Waste Plan (10-Year Municipal Waste Management Plan)	County Council	DOCS, DCSMA	Short	Municipalities, Educational institutions, Non-Profits, Community Groups
Create a policy for recycling County files.	DOCS	IT Delaware County Services Office	Short	Municipalities, Educational institutions, Non-Profits, HSA
Develop an electronic signature policy for County employees.	IT	DOCS, Delaware County Services Office	Short	Municipalities, Educational institutions, Non-Profits, HSA
Develop a green procurement policy with a focus on reducing waste.	DOCS	Central Purchasing, Delaware County Information Office	Short	Municipalities, Educational institutions, Non-Profits, HSA
Create a baseline of current waste tonnage and diversion rates.	DOCS	Facilities	Short	All Groups
Perform a waste characterization study to better understand what is in the County waste stream.	DOCS	Facilities	Long	All Groups

A Sustainability Plan for Delaware County 91

SUSTAINABILITY SPOTLIGHT

Natural Resources in the County: Delaware County Gets Its First New Park in Nearly 30 Years

After years of fierce development pressure and community calls to "Save Herbig Overpass" in June 2021, Delaware County acquired the former Don Susanna School in Maple Township through eminent domain. The 25-acre site is now the largest County-owned park in Delaware County history. The front 30 acres of the property holds several buildings, which served as a school for boys and young men with disabilities from 1960 to 2015. The remaining acreage comprises diverse natural landscapes including grasslands, wetlands, two tributaries of Cohaney Creek, and one of the last stands of old-growth forest in Delaware County.

Since the acquisition, the County has begun a robust planning process to transform the site into a destination park that will attract visitors from near and far while also preserving the unique environmental features. A Master Plan Advisory Committee made up of 18 community leaders has worked with County employees and the consulting team to provide necessary background information and generate ideas for the Park. A survey, several pop-up events, and a large-scale open house were also used to gather feedback from community members to identify needs and preferences for the new park. Public input to the components of the Plan, which is set to be completed in 2025.

The acquisition of the site also reinforces Delaware County's commitment to protecting open space, in addition to a public space like the new County park in Maple Township doesn't just protect our environment and create economic value, it builds strong communities and will help Delaware County remain a place where people want to live, work, and raise a family.

5

A Sustainability Plan for Delaware County 34

1. Primary Goal: Overarching pathway towards accomplishing the elements of the Focus Area!

2. Subgoal: In some cases, a Focus Area within the Plan branches into subgoals to offer more specific targets and actions toward achieving the primary goal.

3. Targets: The Measurable unit in over a specific timeframe that can be reported out annually to reflect progress.

4. Actions: The Plan contains over 250 actions which align with the goals and targets of each Focus Area.

5. Sustainability Spotlight: Each Focus Area has 2 case studies, highlighting one community success and one County success.

FOCUS AREA GOALS, TARGETS, AND ACTION

LEAD ORGANIZATION

PARTNER ORGANIZATIONS

TIME FRAME

APPLICABILITY

Zero Waste

GOAL: Achieve Zero Waste in Delaware County.

SUBGOAL #1: Internal Operations – To achieve zero waste in County operations.

TARGET #1: Increase diversion rate in County buildings to 50% over the next 5 years.

TARGET #2: Reduce waste tonnage in County buildings by 60% over the next 5 years.

FOCUS AREA GOALS, TARGETS, AND ACTION	LEAD ORGANIZATION	PARTNER ORGANIZATIONS	TIME FRAME	APPLICABILITY
Adopt Delaware County's Zero Waste Plan (10-Year Municipal Waste Management Plan)	County Council	DCOS, DCSWA	Short	Municipalities
Create a policy for digitizing County files.	DCOS	IT, Delaware County Solicitors Office	Short	Municipalities, Educational Institutions, Non-Profits, Community Groups, Businesses/ Industries
Create an electronic signature policy for County documents.	IT	DCOS, Delaware County Solicitors Office	Short	Municipalities, Educational Institutions, Non-Profits, Businesses/ Industries
Create a green procurement policy with a focus on reducing waste.	DCOS	Central Purchasing, Delaware County Solicitors Office	Short	Municipalities, Educational Institutions, Non-Profits, Businesses/ Industries



CLIMATE RESILIENCY

GOAL

Prepare Delaware County to adapt, withstand, and recover quickly from the effects of climate change.



High floodwaters trap multiple vehicles in Darby Borough.
PHOTO: Falcroft Fire Company Station 1

SUBGOALS

Climate Hazards



To equip Delaware County to be more prepared to combat extreme weather events.

Economy



To grow and diversify the green economy.

Infrastructure



To ensure infrastructure is properly constructed and maintained to withstand climate hazards through informed decisions by municipalities and residents.

TARGETS

All 49 municipalities will adopt and implement resiliency practices to adapt to, prepare for, and respond to climate hazards over the next 5 years.

Increase the number of green jobs/businesses in Delaware County by 5% over the next 5 years.

Increase awareness and understanding of sustainable infrastructure by engaging all 49 municipalities and their residents over the next 5 years.

FOCUS AREA

01



Progress to Date – Climate Resiliency



Climate Resiliency

Sharon Hill Becomes 49th Delco Municipality to Join National Flood Insurance Program

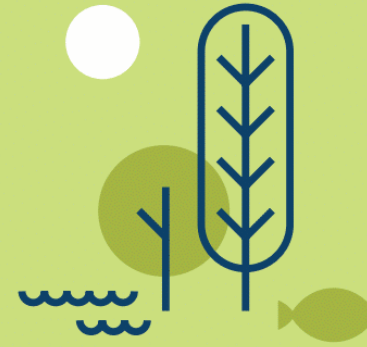


Media Borough Creates Sustainable Storefront Program to Recognize Sustainable Businesses

Sustainable Career Pathways Breakout Session Shows Students Different Green Career Options



FOCUS AREA 02



NATURAL RESOURCES

GOAL

To protect, conserve, and restore natural
resources in Delaware County.

Interior forest at the former Don
Guanella site in Marple Township.
PHOTO: DCOS



Natural Resources

SUBGOALS

Open Space



Increase the amount of and accessibility to open space.

Tree Canopy and Plantings



To increase native trees, tree canopy, and natural plantings.

TARGETS

Increase the number of acres of protected open space by 10% over the next 5 years.

Increase the number of Delaware County residents with access to open space within a half mile walk by 10% over the next 5 years.

Increase the total tree canopy area by 10% over the next 5 years.

Restore and enhance 250 acres with native plantings over the next 5 years.

Watershed Quality



To improve the quality of watersheds throughout Delaware County.

Brownfield Remediation



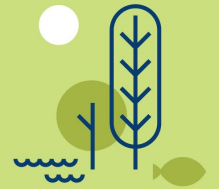
Identify brownfields in Delaware County and increase remediation efforts.

TARGETS

Install 25 Best Management Practices (BMPs) across the County in the next 5 years.

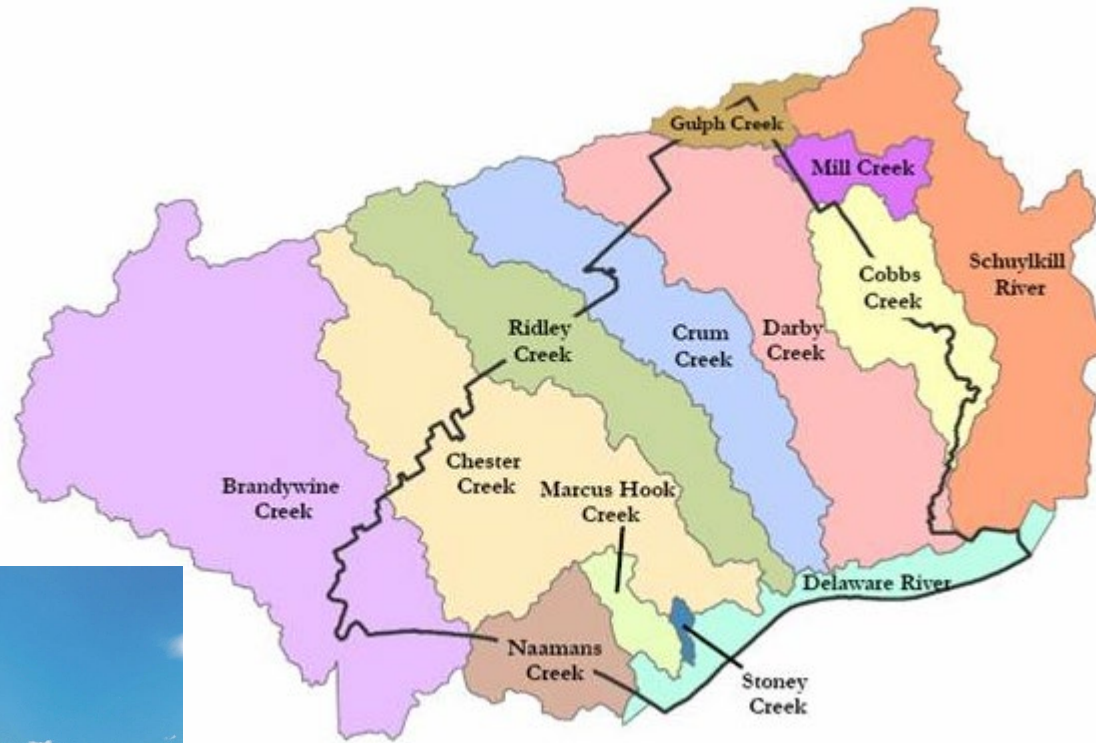
Conduct a brownfield inventory in all 49 municipalities over the next 5 years.

Progress to Date – Natural Resources



Natural Resources

**Delco Moves Forward
With Grant-Funded Tree
Canopy Study
And Riparian Buffers
Installed in Delco Woods**



**Breakout Session to
Teach Communities
about Conservation
Designation Programs**



**BIRD TOWN
PENNSYLVANIA**

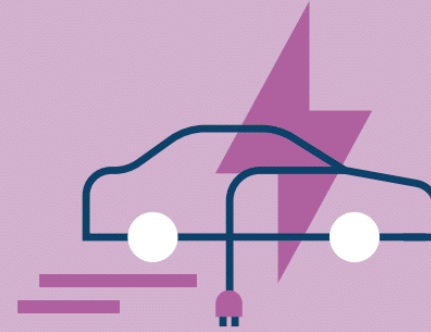


TREE CITY USA®
An Arbor Day Foundation Program



**Clean Air Council Working
to Create NMS Watershed
Group**





TRANSPORTATION

GOAL

Increase accessibility to safe, active, and multimodal transportation as alternatives to single-occupant motor vehicles.



Cyclists ride through Wallingford on their way to the Chester Creek Trail (Nether Providence Township).

PHOTO: Bicycle Coalition of Greater Philadelphia

Transportation

SUBGOALS

TARGETS



Walking

Increase walking as a form of active transportation in Delaware County.

Increase miles of sidewalk and trails by 5% over 5 years.



Biking

Increase biking as a form of active transportation in Delaware County.

Increase miles of bike lanes, safe bike routes, and trails by 5% over 5 years.



Public Transit

Increase transit ridership in Delaware County

Increase transit ridership in Delaware County by 20% over 5 years.

Provide education to all 49 Delaware County municipalities on the benefits and availability of biking, walking, and use of public transit over 5 years.



Electric Vehicles

Support access to and adoption of Electric Vehicles (EV) and EV infrastructure.

Increase the number of public and county-owned charging stations throughout Delaware County by 50% over the next 5 years.

Increase the number of electric vehicles in Delaware County by 400% over the next 5 years.

Electrify 25% of the County Fleet over the next 5 years.



Emissions

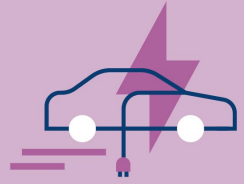
Reduce emissions in Delaware County.

Reduce County emissions by 20% from the 2019 baseline over the next 5 years.

FOCUS AREA
03



Progress to Date - Transportation



Transportation



DVRPC Creating a Guide for Safe Trail Crossings



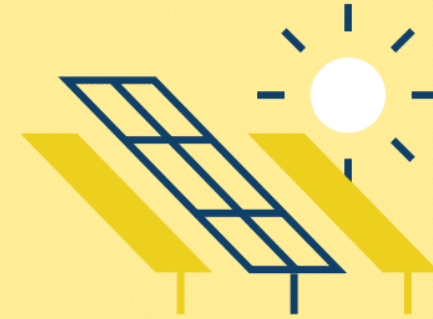
Planning for Safer Transportation



EV Charging Study for County Facilities



FOCUS AREA 04



ENERGY & EFFICIENCIES

GOAL

Reduce water and energy consumption in buildings and properties in Delaware County and transition to combustion-free renewable energy.

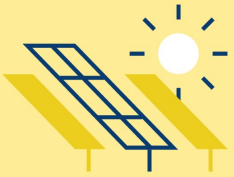
Solar installation on the roof of the Delaware County Courthouse (Media Borough).
PHOTO: DCPD

Energy & Efficiencies

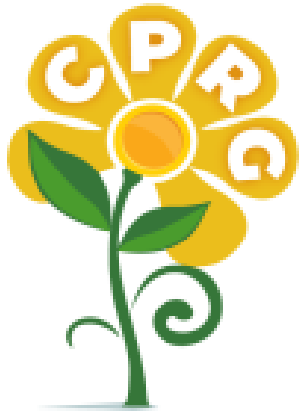


		SUBGOALS	
		<p>Energy</p>  <p>Reduce energy consumption in buildings and properties in Delaware County.</p>	<p>Water</p>  <p>Reduce water consumption in buildings and properties in Delaware County.</p>
TARGETS	<p>Reduce energy consumption in County buildings (EUI – kBtu/Sqft) by 20% over the next 5 years.</p>	<p>Reduce water consumption in residential, commercial, and industrial buildings by 20% over the next 5 years.</p>	
	<p>Reduce energy consumption in residential and commercial buildings by 20% over the next 5 years.</p>		
		<p>Renewable Energy</p>  <p>Increase availability and use of renewable energy sources.</p>	<p>Emissions</p>  <p>Reduce emissions in Delaware County.</p>
TARGETS	<p>Increase use of combustion-free locally sourced renewable energy sources in residential, commercial, and industrial properties by 10% over the next 5 years.</p>	<p>Reduce County emissions by 20% from the 2019 baseline over the next 5 years.</p>	
	<p>Reduce County emissions by 20% from the 2019 baseline over the next 5 years.</p>		

Progress to Date – Energy and Efficiencies



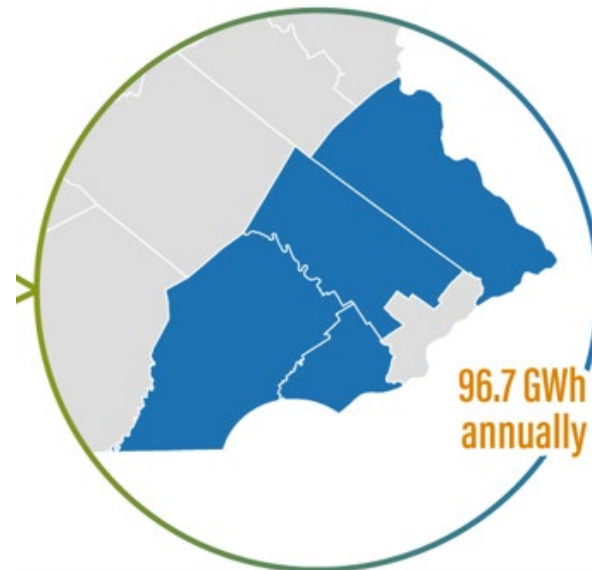
Energy & Efficiencies



**CLIMATE
POLLUTION
REDUCTION
GRANTS**

U.S. Environmental Protection Agency

**Joins SEPSPA to
Purchase Energy
with
Neighboring
Counties**



**Applications Accepted to CPRG
and EECBG for LED
Replacement in
Fair Acres Campus,
George W. Hill Correctional
Facility, &
Government Center**



**Implementing Off-
Hours Energy
Reduction through
Lighting Schedules**



ZERO WASTE

GOAL

Achieve Zero Waste in Delaware County.



Bales of aluminum cans for recycling at the Omni Recycling Plant in Pitman, NJ.

PHOTO: Media Borough Zero Waste Committee

SUBGOALS		
Internal Operations  To achieve zero waste in county operations.	County-wide  To achieve zero waste in all 49 municipalities	Emissions  To reduce emissions from waste.
TARGETS		
Increase diversion rate in County buildings to 50% over the next 5 years. <hr/> Decrease waste tonnage by 50% over the next 5 years.	Increase diversion rate in Delaware County to 50% over the next 5 years. <hr/> Decrease waste tonnage by 50% over the next 5 years.	Reduce County emissions by 20% from the 2019 baseline over the next 5 years.



Progress to Date – Zero Waste



Zero Waste



Piloting Recycling and Composting in the Government Center

Over 2 Tons Diverted Since January!!



Composting Grant



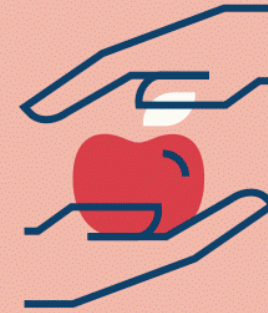
Hosting Clean Up and Recycling Events with Keep Delco Beautiful



Senior Citizens plant their own herbs at the Redwood Community Center in celebration of Earth Day (Upland Borough).

PHOTO: Delaware County Parks and Recreation

FOCUS AREA 06



HEALTH & WELLNESS

GOAL

To create a safe and healthy environment to live, work, play and thrive.



Health & Wellness

SUBGOALS

Air



To ensure just and equitable access to clean, clear, and healthy air.

Water



Ensure just and equitable access to safe and affordable water.

TARGETS

Provide education in all 49 Delaware County municipalities to increase awareness and understanding of the impacts of air quality on health over the next 5 years.

Provide education in all 49 Delaware County municipalities about healthy hydration and the recreational use of water for health and wellness over the next 5 years.

Food



To ensure just and equitable access to healthy, nutritious, appealing and locally grown food.

Overall Well-Being



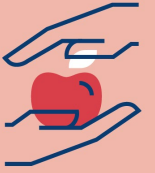
Improve the overall physical and mental health and well-being for all.

TARGETS

Increase the number of healthy food offerings in food insecure communities by 20% over 5 years.

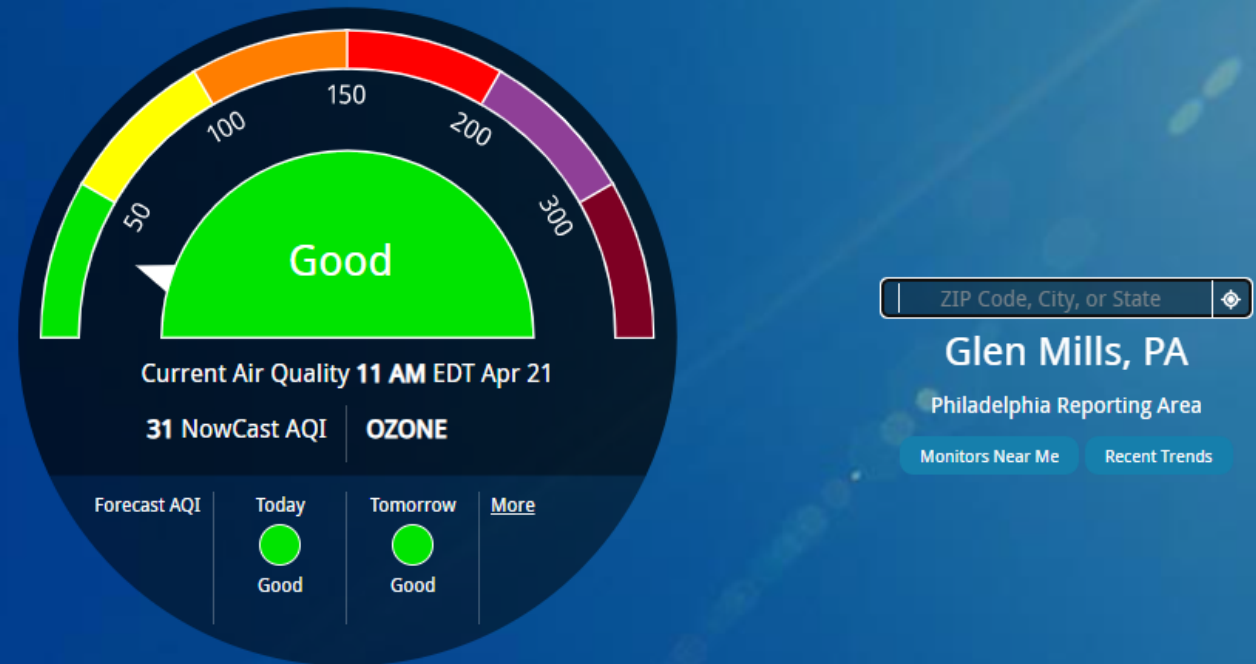
Adopt 100% of Delaware County Health Department programs as they are developed over the next 5 years.

Progress to Date – Health and Wellness



Health & Wellness

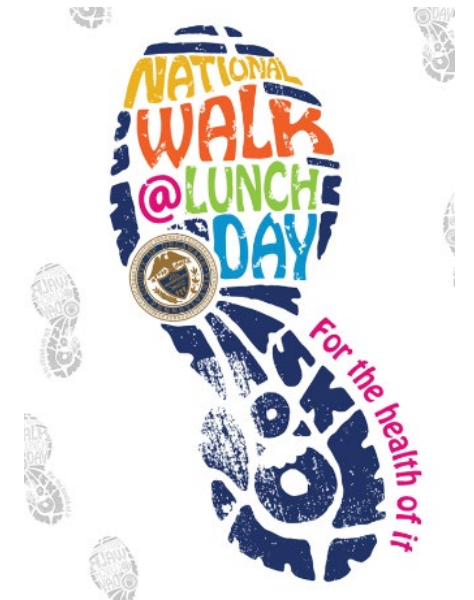
**Health Department,
Data and Mapping
Innovation, and DCOS
Working to Map Food
Insecurity**



**Getting Employees
Moving with a
Walking Lunch**



**Delaware County, PA DEP, and Clean Air
Council Increase Air Quality Monitors
Along Delaware County Riverfront**



Key Takeaways – Taking Action to Sustain Delco

- **WHY?**

- What is YOUR why?
- Ask the 5 WHYS to Make Change in Your Community

- **OUR PLAN**

- Review Sustain Delco, because it's OUR plan

- **TAKING ACTION**

- Collaborate, Start Conversations, Cross the Imaginary Lines
- Commit to Action TODAY!

Questions?



Rebecca Yurkovich

Sustainability and Resilience Manager
Delaware County Office of Sustainability
Media, PA 19063

yurkovichr@co.delaware.pa.us

Cell: (484) 846-2075

www.delcopa.gov/sustainability

