



FUNDING SOURCES



PLANNER'S PORTFOLIO

ISSUE 4

APRIL 2016



delaware county
planning department



PLANNER'S PORTFOLIO FUNDING SOURCES

- 2 TRANSPORTATION
- 4 OPEN SPACE AND TRAILS
- 6 COMMUNITY REVITALIZATION
- 8 BROWNFIELDS
- 10 INFRASTRUCTURE AND ENERGY CONSERVATION
- 12 HISTORIC PRESERVATION

Planner's Portfolio Series

The Planner's Portfolio Series is an outreach effort developed by Delaware County Council in order to explore the planning concepts available for communities to take advantage of the unique opportunities across Delaware County.

The pattern on the cover page, and found throughout this series, represents the importance of each individual component in the larger network. The Planner's Portfolio Series explores several of these components and how they can support community character in Delaware County.

For more information, contact the Delaware County Planning Department at 610-891-5200 or visit www.co.delaware.pa.us/planning to see the complete Planner's Portfolio series.



OVERVIEW

One of the most important, and often most difficult, portions of a project is locating funding to implement. This issue of the Planner's Portfolio series is intended to assist communities in doing that. It includes many of the most common funding programs for different community improvements, from large scale roadway improvements to municipal energy efficiency programs.

While this is not a complete list, it is a good starting point. The Delaware County Planning Department is available to further help communities identify and pursue potential funding sources for implementing projects. For more information and assistance, contact the Planning Department at 610-891-5200 or planning_department@co.delaware.pa.us.

Match Funding

Funding opportunities nearly always require some amount of local funding match. Most often, this takes the form of local cash or in-kind labor support. Some programs will allow communities to count the time of volunteers towards the match.

Communities may also find it beneficial to partner with other municipalities or non-profit organizations, or even private businesses, when it benefits all parties involved.

TRANSPORTATION

Pennsylvania Department of Transportation (PennDOT)

works with local governments, the private sector, planning partners, and others to maintain the state's transportation network.

Multimodal Transportation Fund (MTF), a joint effort by PennDOT and the Pennsylvania Department of Community & Economic Development, provides grants to ensure that a safe and reliable system of transportation is available to residents of the Commonwealth. The program is intended to provide financial assistance to municipalities, councils of governments, businesses, economic development organizations, public transportation agencies, rail/freight operators, and port operators in order to improve transportation assets to enhance communities, pedestrian safety, and transit facilities. Funds may be used for the development, rehabilitation, and enhancement of existing streetscapes, lighting, sidewalks, pedestrian safety, transportation asset connectivity, and transit-oriented development. For more information: www.penndot.gov/ProjectAndPrograms/MultimodalProgram/

Transportation Alternative Program (TAP) provides funding for programs and projects defined as transportation alternatives, including on- and off-road pedestrian and bicycle facilities; infrastructure projects for improving non-driver access to public transportation and enhanced mobility; community improvement activities; trails that serve a transportation purpose; and safe routes to school projects. Local governments, regional transportation authorities, transit agencies, natural resource or public land agencies, school districts, local education agencies, or schools, and tribal governments are eligible to apply. Applicants pay pre-construction costs on their own (design, environmental, right of way acquisition, utility). No applicant match is required. For more information: <https://spportal.dot.pa.gov/Planning/AppReg>

Green Light-Go: Pennsylvania's Municipal Signal Partnership Program works to improve safety and mobility by reducing congestion and

The **Transportation Improvement Program (TIP)** is the Delaware Valley region's agreed-upon list of specific priority projects and is required by federal law in order for the region to receive and spend federal transportation funds. Administered by the Delaware Valley Regional Planning Commission, the Pennsylvania TIP is a multimodal program, supporting traditional highway and public transit projects as well as bicycle, pedestrian, and freight-related projects. The TIP is a four year program that shows estimated costs and schedules by project and is financially constrained. A project's inclusion in the TIP signifies regional agreement on the priority of the project and establishes eligibility for federal funding.

improving efficiency of existing traffic signals on state highways. The program provides funds to municipalities for the operation and maintenance of traffic signals along critical and designated corridors on state highways. Municipal applications require a 50% match using municipal or private cash. For more information: www.dot.state.pa.us/signals

Automated Red Light Enforcement (ARLE) Grant Program funds worthwhile, relatively low-cost projects that improve the safety and mobility of the traveling public through revenues generated by the state's Automated Red Light Enforcement Program. Eligible projects are wide-ranging in scope and are not required to involve ARLE systems. Local authorities, such as counties, municipalities, and other local boards or bodies that have authority to enact laws relating to traffic, are eligible to apply. For more information: www.dot.state.pa.us/signals

Pennsylvania Infrastructure Bank (PIB) is a PennDOT program that provides low-interest loans to help fund various transportation projects within the Commonwealth. Borrowers include cities, townships, boroughs, counties, transportation authorities, economic development agencies, not-for-profit organizations, and private corporations. The PIB provides a low-cost means to fund projects, in whole or in part. For more information: www.penndot.gov/ProjectAndPrograms/Planning

Delaware Valley Regional Planning Commission (DVRPC) maintains the region's Transportation Improvement Program (TIP) and



Ridley Park Borough

offers grants and funding for various transportation programs and projects that further support and connect the Delaware Valley region.

Transportation and Community Development Initiative (TCDI) provides funding for early stage planning, analysis, or design initiatives for projects or programs that enhance smart development or revitalization and also improve the efficiency of the regional transportation system. Municipal and county governments within the nine-county DVRPC region are eligible to apply. For more information: www.dvrpc.org/tcdi

Congestion Mitigation and Air Quality Improvement Program (CMAQ) funds transportation projects that will improve air quality and reduce traffic congestion in the Delaware Valley Region. CMAQ eligible projects must demonstrably reduce air pollution emissions. Public agencies and public-private partnerships with a public agency sponsor are eligible to apply. CMAQ Program is a reimbursement program for only those costs that are eligible under federal law. For more information: www.dvrpc.org/cmaq

Municipal Bridge Retro-Reimbursement Program funds locally owned, structurally deficient bridge rehabilitation or replacement projects located within Bucks, Chester, Delaware, and Montgomery Counties by employing PennDOT's retro-reimbursement process. For more information: www.dvrpc.org/MBRP/

OPEN SPACE AND TRAILS

Pennsylvania Department of Community and Economic Development (DCED) supports various statewide initiatives that preserve natural resources. Housed within the DCED, the Commonwealth Financing Authority allocates funds from the Act 13 Marcellus Legacy Fund for a variety of environmentally and community focused grants.

Greenways, Trails and Recreation Program allocates grants for the planning, acquisition, development, rehabilitation, and repair of greenways, recreational trails, open space, parks, and beautification projects. For-profit businesses, municipalities, councils of governments, authorized organizations, institutions of higher education, and watershed organizations are eligible to apply for funding. Grants shall not exceed \$250,000. A 15% match of the total project cost is required. For more information: <https://dced.pa.gov/programs/greenways-trails-and-recreation-program-gtrp/>

Watershed Restoration and Protection Program allocates grants for projects that restore and maintain restored stream reaches impaired by the uncontrolled discharge of nonpoint source polluted runoff, and ultimately to remove these streams from the Department of Environmental Protection's Impaired Waters list. Municipalities, councils of governments, authorized organization, institutions of higher education, watershed organizations, and for-profit businesses are eligible to apply. There is a maximum of \$300,000 for any project. A 15% match of the total project cost is required. For more information: <https://dced.pa.gov/programs/watershed-restoration-protection-program-wrpp/>

Flood Mitigation Program (FMP) funds projects authorized by a flood protection authority, the Department of Environmental Protection (DEP), the U.S. Army Corps of Engineers, the U.S. Department of Agriculture's Natural Resources Conservation Service, or a local government. A 15% match of the total project cost is required.

Pennsylvania Department of Conservation and Natural Resources (PA DCNR) works to conserve and sustain Pennsylvania's natural resources for present and future generations' enjoyment. PA DCNR provides support for local recreation and conservation initiatives through the forms of grants, technical assistance, information exchange, and trainings across the Commonwealth. Financial assistance is allocated through PA DCNR's Community Conservation Partnerships Program.

Community Conservation Partnerships Program (C2P2) provides grants for trail projects, land acquisition and conservation, park rehabilitation and development, and community recreation and conservation planning projects. Partnership projects – collaborative statewide or regional recreation, conservation, or heritage projects – that meet certain criteria are also eligible for funding. Municipalities, municipal agencies, non-profit organizations, pre-qualified land trusts, and some for-profit enterprises are eligible to apply. Some C2P2 applications are selected for funding through the Federal Land and Water Conservation Fund Program or the Pennsylvania Recreational Trails Program, which require some supplemental information to address federal requirements. For more information: www.dcnr.state.pa.us/

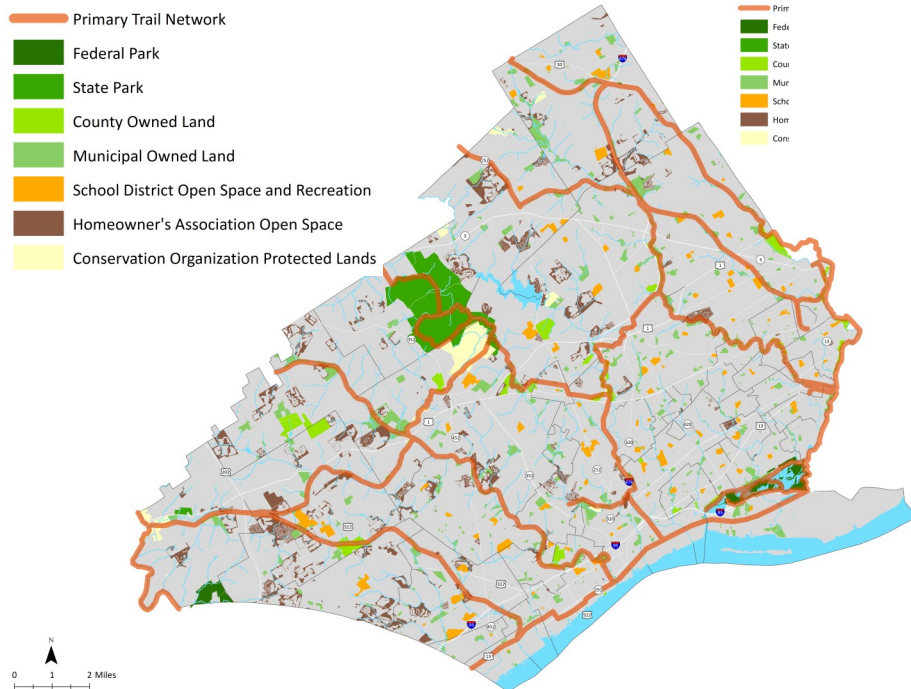
The Circuit is a regional trail network, composed of hundreds of miles of interconnected trails, that is growing in size each year. One of America's largest trail networks, the Circuit is composed of 300 miles of completed trails with a vision of completing 750 miles of trails across the nine-county region in Pennsylvania and New Jersey. A collaboration of nearly 65 nonprofit organizations, foundations, and agencies is working to advance the completion of the Circuit Trails. A premiere regional amenity, the Circuit Trails connect people to jobs, communities, parks, and waterways. Learn more at www.ConnecttheCircuit.org.

Delaware County Open Space, Recreation, and Greenway Plan

The Open Space Plan identifies three interrelated goals - conserve, enhance, and connect - which represent the Plan's three-pronged approach to address the County's open space needs and opportunities so as to ensure a sustainable quality of life in the 21st Century.

In order to reach those goals, the Plan sets forth broad objectives intended to help guide open space planning and implementation efforts in the County.

It also envisions the Delaware County Primary Trail Network, a 130-mile network of multi-use trails, which will provide travel and recreation connections near and between all corners of Delaware County as well as to existing and proposed trails in adjacent counties. For more information, and to read the plan, go to www.co.delaware.pa.us/planning/pubs/delco2035/OpenSpaceandRecreationPlan.html.



Pennsylvania Department of Transportation (PennDOT)

Multimodal Transportation Fund (MTF), a joint effort by DCED and the PennDOT, provides grants to ensure that a safe and reliable system of transportation is available to residents of the Commonwealth. Projects supporting transit connectivity and bicycle and pedestrian improvements are eligible for funding, along with many other multimodal projects. For more information, consult the [Transportation Section](#) in this portfolio or go to www.penndot.gov/ProjectAndPrograms/MultimodalProgram/

Transportation Alternative Program (TAP) provides federal funding for programs and projects defined as transportation alternatives, including on- and off-road pedestrian and bicycle facilities, infrastructure projects for improving non-driver access to public transportation and enhanced mobility, trails that serve a transportation purpose, and safe routes to school projects. For more information, consult the [Transportation Section](#) in this portfolio or go to <https://spportal.dot.pa.gov/Planning/AppReg>

Private Sources

PECO Green Regions Grants provide financial support to any township, borough, city, or regional recreational authority within PECO's service territory, which includes all of Delaware County, for efforts in preserving, protecting, and improving public open spaces. Grants shall not exceed \$10,000 and may be used to pay for up to 50% of eligible activities. This initiative is a partnership of PECO and Natural Lands Trust. For more information: <https://natlands.org/what-we-do/growing-greener-communities/peco-green-region/>

COMMUNITY REVITALIZATION

U.S. Department of Housing and Urban Development (HUD)

works to promote homeownership, support community development, and increase access to affordable housing, free from discrimination. HUD works with federal and local partners through a variety of offices and initiatives.

Community Development Block Grants (CDBG) Program is a federally-funded program that provides grants to states and localities to provide decent housing and suitable living environments, and to expand economic opportunities, chiefly for low- and moderate-income persons. Local governments, non-profits, and for-profit developers are all eligible to apply. For more information: Delaware County Office of Housing and Community Development at www.co.delaware.pa.us/hcd/index.html

Pennsylvania Department of Community and Economic Development (DCED)

works to foster opportunities for Pennsylvanian businesses to grow and communities to succeed in a global economy. DCED works directly with business owners, as well as with the federal, state, and local governments to achieve their missions.

Business in Our Sites Loans (BOS) provides loans for the acquisition and development of key sites for future use by businesses, private developers, and others. Proposed projects on utilized or undeveloped sites are both eligible for funding. Eligible applicants include municipalities, municipal authorities, industrial development agencies, and private developers. For more information: <https://dced.pa.gov/programs/business-in-our-sites-grants-and-loans-bos/>

Growing Greener II – Main Street and Downtown Redevelopment Grants fund projects or activities for Main Street and downtown redevelopment related to smart growth. Eligible applicants include local governments, county, and municipal authorities, and not for-profit organizations. Projects may include community development and housing activities, downtown reinvestment, facade and anchor building activities, residential reinvestment, and business assistance. For more information: <https://www.dep.pa.gov/Citizens/GrantsLoansRebates/Growing-Greener/Pages/What-is-Growing-Greener-II.aspx>



Media Borough

As defined by the Delaware Valley Regional Planning Commission, **smart growth** describes an approach to land use planning that recognizes the relationship between transportation infrastructure and land use. It promotes a concentration of development and diversity of uses and encourages new development to take place near existing transportation facilities. Fiscally and environmentally sound, as well as socially conscious, smart growth planning promotes infill development and adaptive reuse of existing buildings, land and resource conservation, and mixed-use development that includes housing for different income levels.



Keystone Communities Program encourages the creation of partnerships between the public (governmental) and private (non-governmental) sectors in community revitalization efforts. The KCP offers 4 designation types: Keystone Main Street, Keystone Elm Street, Keystone Enterprise Zone, and Keystone Communities. Projects may include community revitalization and economic development projects involving physical improvements to a specific area; revitalization of residential and mixed use neighborhoods and downtowns; and physical improvements supported by a downtown plan, among other projects. Eligible applicants include units of local government, redevelopment authorities, housing authorities, nonprofit organizations, community development corporations, business improvement districts, and neighborhood improvement districts.

Keystone Opportunity Zones (KOZ) are designated geographic areas that can provide state and local tax benefits to local businesses and residents. The overarching goal of KOZs is to develop a community's abandoned, unused, and/or underutilized land and buildings into business districts and residential areas. Qualified businesses, property owners, and residents are all eligible to apply for KOZ tax abatements. For more information: <https://dced.pa.gov/programs/keystone-opportunity-zones-kozs/>

Transportation and Community Development Initiative (TCDI), a program of the Delaware Valley Regional Planning Commission, provides funding for projects or programs that enhance smart development or revitalization. Municipal and county governments within the nine-county DVRPC region are eligible to apply. For more information consult the [Transportation Section](#) in this portfolio or www.dvrpc.org/tcdi.

BROWNFIELDS

U.S. Environmental Protection Agency (EPA) works to protect human health and the environment through developing and enforcing standards and regulations; allocating grants to state environmental programs, non-profits, educational institutions, and others; scientific research; and educating the public.

The EPA's **Brownfields Program** provides direct funding for brownfields assessment, cleanup, revolving loans, and environmental job training. To facilitate the leveraging of public resources, EPA's Brownfields Program collaborates with other EPA programs, other federal partners, and state agencies to identify and make available resources that can be used for brownfields activities. In addition to direct brownfields funding, list below, EPA also provides technical information on brownfields financing matters. For more information on the EPA's Brownfield Program: www.epa.gov/brownfields/

Brownfields Assessment Grants provide funding for the inventory, assessment, and planning (including cleanup planning) related to brownfield sites. State, local, and tribal governments as well as land clearance authorities, quasi-governmental entities, regional councils, and redevelopment agencies are eligible to receive funding.

Brownfields Revolving Loan Fund (RLF) Grants provide funding to capitalize a revolving loan fund that provides loans and sub-grants to carry out cleanup activities at brownfields. At least 60% of the awarded funds must be used to implement a revolving loan fund, in order to provide no-interest or low-interest loans for brownfields cleanups.

Brownfield Cleanup Grants fund cleanups addressing sites contaminated by petroleum and hazardous substances, pollutants, or contaminants. An eligible entity may apply for up to \$200,000 for up to three cleanup sites. An applicant must own the site for which it is requesting funding at time of application. The performance period for these grants is three years.

U.S. Department of Housing and Urban Development (HUD)

According to the Pennsylvania Department of Environmental Protection (DEP), **brownfields** are underutilized properties where the presence, or potential presence, of hazardous substances, pollutants, or contaminants complicates expansion, redevelopment, or reuse of the properties. Common examples may include former industrial sites, factories, gas stations, or vacant lots with contaminated fill.



Chester City (prior to construction of Talen Energy Stadium)

provides federal resources to fund a wide variety of community development projects such as public facilities, infrastructure, job-creation for low- and moderate-income persons, and other projects. These projects must principally benefit income eligible persons or communities. HUD works with federal and local partners through a variety of offices and initiatives.

Brownfields Economic Development Initiative (BEDI) is a competitive grant program designed to assist cities with the redevelopment of abandoned and underused industrial and commercial facilities, where expansion and redevelopment is burdened by real or potential environmental contamination. For more information:

www.hudexchange.info/programs/bedi/

Pennsylvania Department of Community and Economic Development (DCED) works to foster opportunities for



Chester City (Talen Energy Stadium)

Pennsylvanian businesses to grow sustainably and communities to succeed in a global economy.

Industrial Sites Reuse Program provides grants and low-interest loans for environmental assessments and remediation at industrial sites. Only entities that did not cause or contribute to environmental contamination may apply. Potential eligible applicants include: municipalities, municipal authorities, redevelopment authorities, economic development agencies, private companies, and developers. For more information: <https://dced.pa.gov/programs/industrial-sites-reuse-program-isrp/>

Pennsylvania Infrastructure Investment Authority

(PennVEST) is a state authority that was established in 1988 with the purpose of improving water quality in Pennsylvania by providing low interest loans and grants for drinking water and wastewater capital improvement projects.

Brownfield Redevelopment Loans are low-interest loans for the remediation of brownfields that pose a threat to local groundwater or surface water sources. For more information: <http://www.pennvest.pa.gov/>

INFRASTRUCTURE

Pennsylvania Department of Community and Economic Development (DCED) works to foster opportunities for Pennsylvanian businesses to grow sustainably and communities to succeed in a global economy.

Baseline Water Quality Data Program funds practices for water sample collection and analysis to document existing groundwater quality conditions on private water supplies. Pennsylvania municipalities, councils of governments, authorized organizations, institutions of higher education, watershed organizations, and for-profit businesses are eligible to apply. For more information: <https://dced.pa.gov/programs/baseline-water-quality-data-program/>

Flood Mitigation Program (FMP) funds projects authorized by a flood protection authority, the Department of Environmental Protection (DEP), the U.S. Army Corps of Engineers (Corps), the U.S. Department of Agriculture's Natural Resources Conservation Service (NRCS), or identified by a local government.

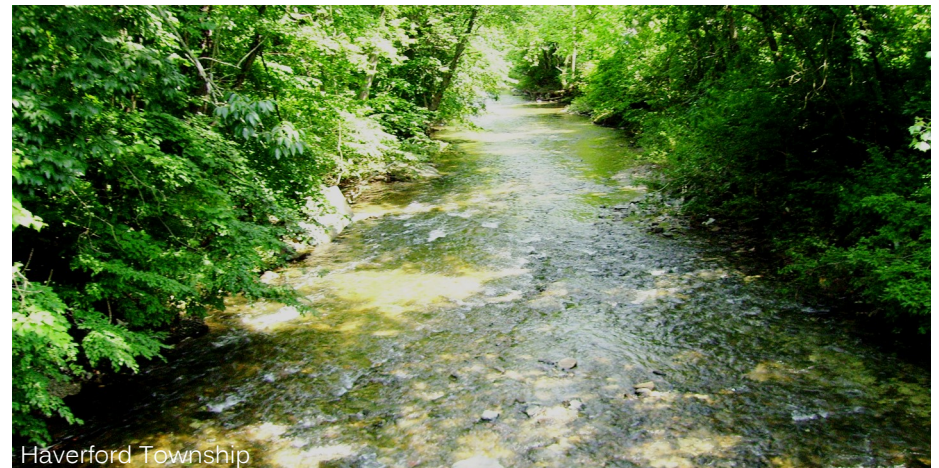
Sewage Facilities Program rewards grants for the costs associated with the planning work required under the Pennsylvania Sewage Facilities Act (Act 357). Municipalities, councils of government, authorized organizations, institutions of higher education, watershed organizations, and for-profit businesses are all eligible to apply. For more information: <https://dced.pa.gov/programs/sewage-facilities-program-sfp/>

Water Supply and Wastewater Infrastructure Program (PennWorks) provides single-year or multi-year grants and loans to municipalities, municipal authorities, industrial development corporations, and investor-owned water or wastewater enterprises. Projects that construct, expand, or improve water and wastewater infrastructure which are related to economic development are eligible for funding. For more information: <https://dced.pa.gov/programs/water-supply-wastewater-infrastructure-program-pennworks-archived/>

Pennsylvania Infrastructure Investment Authority (PennVEST) administers and finances grants and low-interest loans for the design, engineering and construction of publicly and privately owned sewer, stormwater, wastewater, and drinking water infrastructure projects throughout the Commonwealth. For more information: www.pennvest.pa.gov/

Pennsylvania Department of Environmental Protection (DEP) works to protect Pennsylvania's air, land, and water from pollution and to provide for the health and safety of its citizens through a cleaner environment. DEP works with individuals, organizations, governments, and businesses to prevent pollution and restore natural resources.

Act 537 Sewage Facilities Planning Grants fund work addressing existing sewage disposal needs and help prevent future problems through proper planning, permitting, and design of all types of sewage facilities. For more information: www.dep.state.pa.us



Haverford Township

ENERGY CONSERVATION

Commonwealth Financing Authority (CFA)

The Renewable Energy Program (REP), the Alternative Energy Program (ACE), and the Solar Energy Program (SEP) are all administered jointly by the Department of Community and Economic Development and the Department of Environmental Protection under the direction of the Commonwealth Financing Authority (CFA).

Alternative and Clean Energy Program (ACE) provides financial assistance through grants and loans to support the utilization, development, and construction of alternative and clean energy projects in Pennsylvania. Businesses, economic development organizations, and political subdivisions, such as municipalities, counties, and school districts, are eligible to apply. A 50% match by the applicant is required. For more information: <https://dced.pa.gov/programs/alternative-clean-energy-program-ace/>

Renewable Energy Program (REP) - Geothermal and Wind Projects provides financial assistance through grants and loans to promote the use of geothermal and wind energy in Pennsylvania. Businesses, economic development organizations, individuals (geothermal only), and political subdivisions, such as municipalities, counties, and school districts, are eligible to apply. For more information: <https://dced.pa.gov/programs/renewable-energy-program-rep-geothermal-wind-projects/>

Solar Energy Program (SEP) provides financial assistance in the forms of grants and loan funds to promote the use of solar energy in Pennsylvania. Businesses, economic development organizations, and political subdivisions, including municipalities, counties, and school districts, are eligible to apply. For more information: <https://dced.pa.gov/programs/solar-energy-program-sep/>



Private Sources

Sustainable Energy Fund is a non-profit that provides loans to municipalities, commercial businesses, and non-profit organizations to assist in overcoming educational and financial barriers to a sustainable energy future. For more information: www.theseef.org

HISTORIC PRESERVATION

U.S. Department of Housing and Urban Development (HUD) programs support and facilitate the use of historic properties for affordable housing, economic development, and community revitalization.

Community Development Block Grant (CDBG) Program is a flexible federal program that provides communities with resources to address a variety of community development needs. Historic preservation and heritage tourism are two components of the work accomplished by local governments through the CDBG program. Non-profits, as well as municipalities, are eligible to apply. For more information, contact the Delaware County Office of Housing and Community Development at www.co.delaware.pa.us/hcd/index.html

National Parks Service (NPS) develops national standards and guidelines for preserving, rehabilitating, restoring, and reconstructing historic properties.

Federal Historic Preservation Tax Credits encourage private sector investment in the rehabilitation and re-use of historic buildings. Tax credits are available for sites on the National Register of Historic Places (or those in a National Register Historic District) for rehabilitation. Only income producing structures are eligible, but the development can be an incentive for revitalization of an area. For more information: www.nps.gov/tps/tax-incentives.htm

Pennsylvania Department of Community and Economic Development (DCED) works to foster opportunities for Pennsylvanian businesses to grow sustainably and communities to succeed in a global economy.

Keystone Communities Program assists and supports Pennsylvania communities in revitalization efforts. For more information, consult the [Community Revitalization Section](#) of this portfolio.

Pennsylvania Historical and Museum Commission (PHMC) is



the official history agency of the Commonwealth of Pennsylvania. PHMC provides a variety of funding opportunities for the collection, conservation, and interpretation of Pennsylvania's historic heritage.

Historic Preservation Tax Credit (HPTC) allows qualified taxpayers to receive tax credits for restoring qualified historic structures into income-producing properties. All projects must include a qualified rehabilitation



Maintaining Your Historic Home: A Practical Guide for Homeowners

Preserving historic buildings not only preserves the character of an area but it also reduces the need for new construction materials. Delaware County developed a guide to help homeowners maintain the architectural uniqueness of their home and protect it from insensitive alterations by preserving original building materials and design standards. The guide is intended to help people understand how to maintain, repair, and preserve details of their historic houses. For more information, and to read the guide, go to www.co.delaware.pa.us/planning/pubs/MaintainingYourHistoricHome.

plan that is approved by the PHMC as being consistent with the standards for rehabilitation of historic buildings as adopted by the United States Secretary of the Interior. For more information:

www.phmc.pa.gov/Preservation/Grants-Funding/Pages/State-Tax-Credits.aspx

Certified Local Government Program (CLG), a National Park Service program enabled by the National Historic Preservation Act, provides

valuable technical assistance and small grants to local governments seeking to strengthen local historic preservation activities. The CLG program is administered by the PHMC's Bureau for Historic Preservation, which serves as the Pennsylvania State Historic Preservation Office. Funding is exclusively available for Certified Local Governments. Grant awards are subject to the annual availability of federal funds.

Keystone Historic Preservation Grant Program provides funding support for projects that identify, preserve, promote, and protect historic and archaeological resources for both the benefit of the public and the revitalization of communities. Funding is available to nonprofit organizations and local governments for the planning and development for publicly accessible historic resources listed in or eligible for listing in the National Register of Historic Places. A 50% cash match by the applicant is required. For more information: www.phmc.pa.gov/Preservation/Grants-Funding/Pages/Planning-Projects

Additional Resources

Preservation Fund of Pennsylvania provides funds to acquire and resell threatened historic properties to buyers willing to restore and maintain them. Additionally, low interest loans are available to organizations and government agencies for the restoration or rehabilitation of specific historic properties. For more information: www.preservationpa.org

Property Tax Abatement and Freeze are tools used by municipalities to incentivize preservation. A municipal tax is lowered or frozen for a period of time for those historic structures undergoing a rehabilitation or reuse.

OTHER PLANNER'S PORTFOLIOS:



CHARACTER AREAS
March 2016



COMMUNITY PLACEMAKING
March 2016



COMPLETE STREETS
April 2016



Court House and Government Center
201 West Front Street
Media, Pennsylvania 19063

Delaware County Council

Mario Civera, Jr., Chairman
Colleen P. Morrone, Vice Chairman
John P. McBlain
David J. White
Michael F. Culp

County Executive

Marianne Grace

Planning Department

Linda F. Hill, Director
Ryan T. Judge, Senior Planner

For more information, contact the Delaware County Planning Department at 610-891-5200 or visit www.co.delaware.pa.us/planning to see the complete Planner's Portfolio series.