

Delco Green Ways

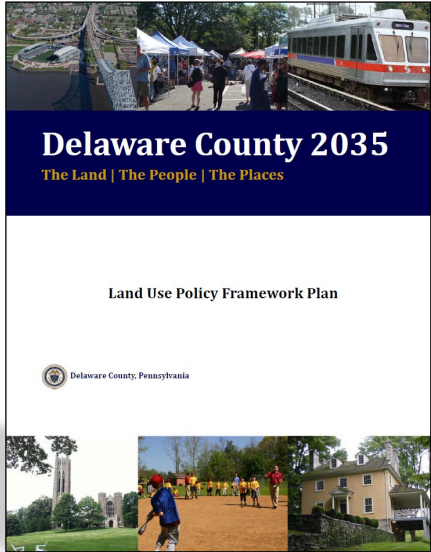
Delaware County Planning Commission

July 18, 2019

Steven R. Beckley, AICP
Delaware County Planning Department
www.delcopa.gov/planning

DELAWARE COUNTY OPEN SPACE PLANNING HISTORY





Delaware County 2035

Land Use
Framework Plan
(2013)

Open Space,
Recreation, and
Greenway Plan
(2015)

Economic
Development
Plan
(2017)

Transportation
Plan
(2017)

Historic
Preservation Plan
(2018)

Housing Plan
(Under Development)

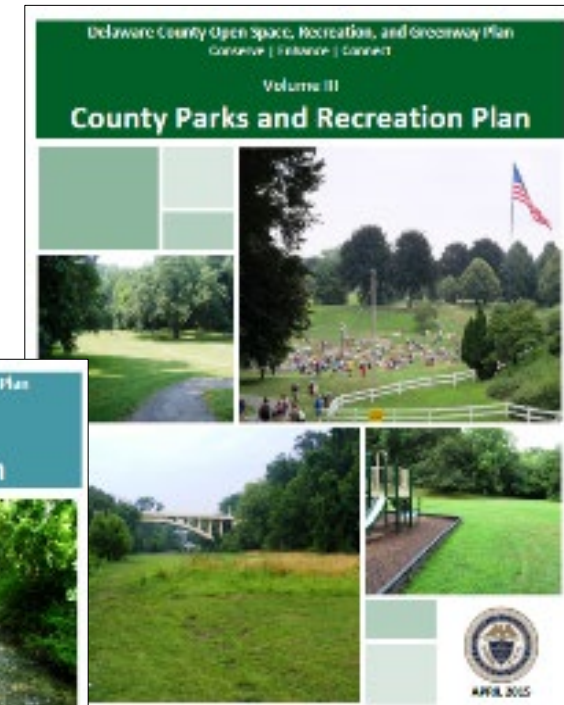
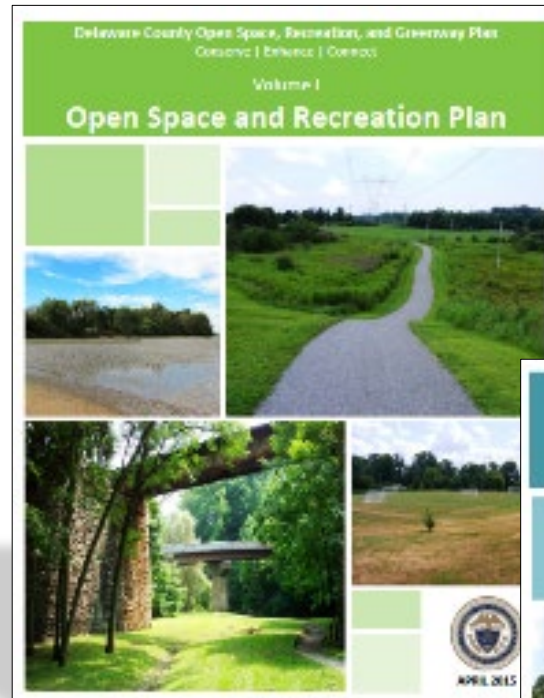


OPEN SPACE, RECREATION, AND GREENWAY PLAN

OPEN SPACE, RECREATION, AND GREENWAY PLAN

3-Volume Plan

Adopted
April 22, 2015



OPEN SPACE, RECREATION, AND GREENWAY PLAN

PUBLIC OUTREACH



Public Meetings

- Two Public Meetings
- Public Comment Period
- Final Public Meeting



Public Survey

- Online Questionnaire
- 1,267 Responses



Focus Groups

- Trails and Connections
- Municipal Parks and Recreation

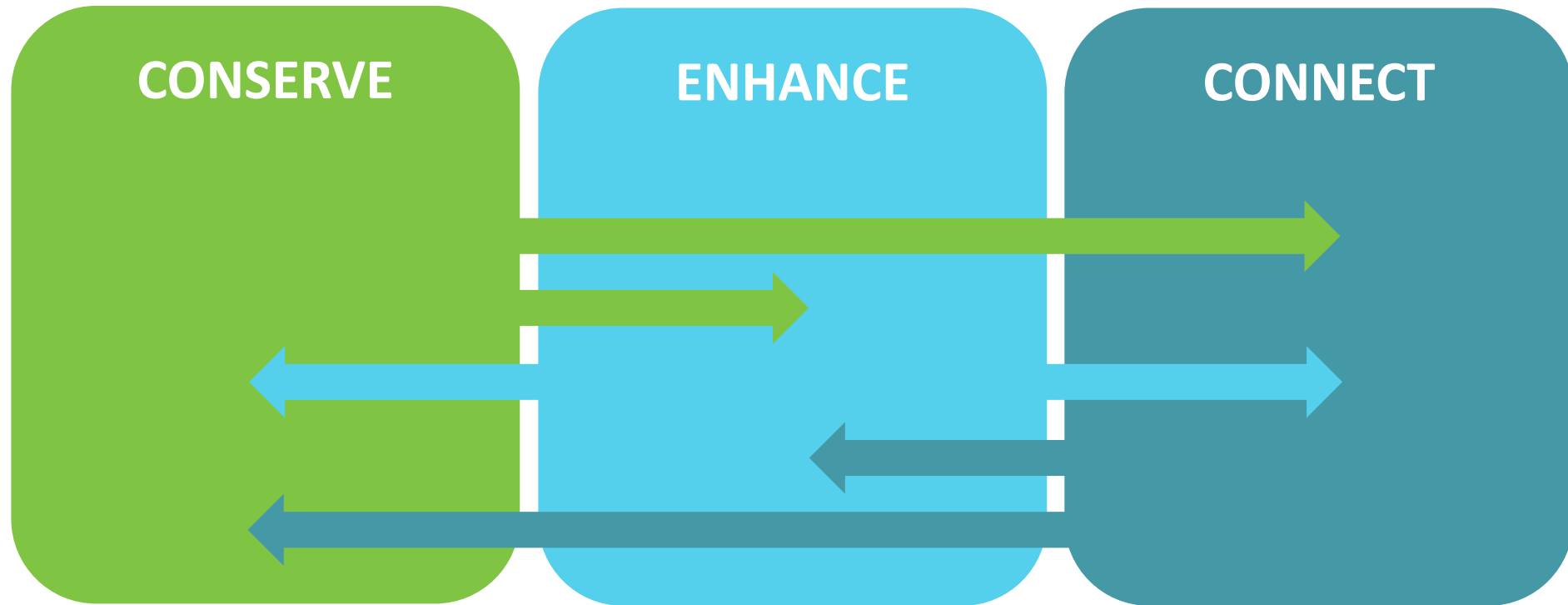


Interviews

- Over 50 Stakeholders Interviewed

OPEN SPACE, RECREATION, AND GREENWAY PLAN

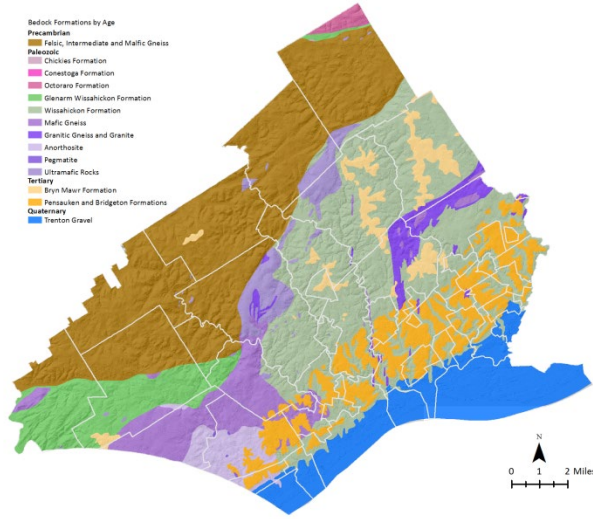
GOALS



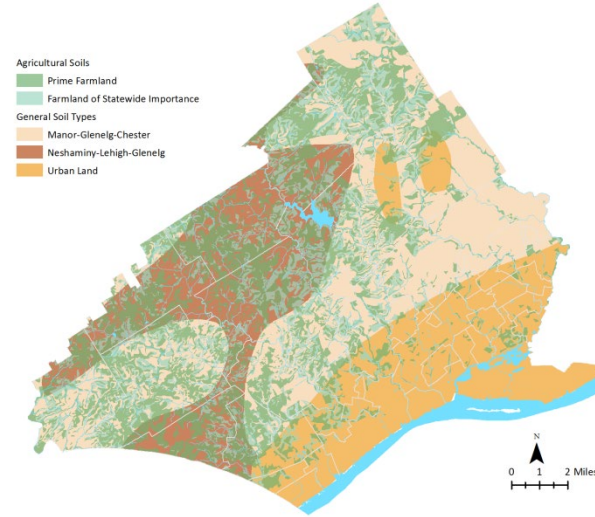
OPEN SPACE, RECREATION, AND GREENWAY PLAN

NATURAL FEATURES

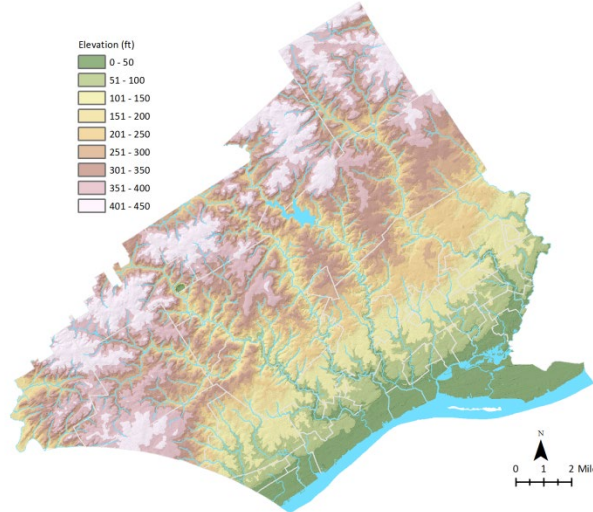
Geologic Formations



Soils



Topography

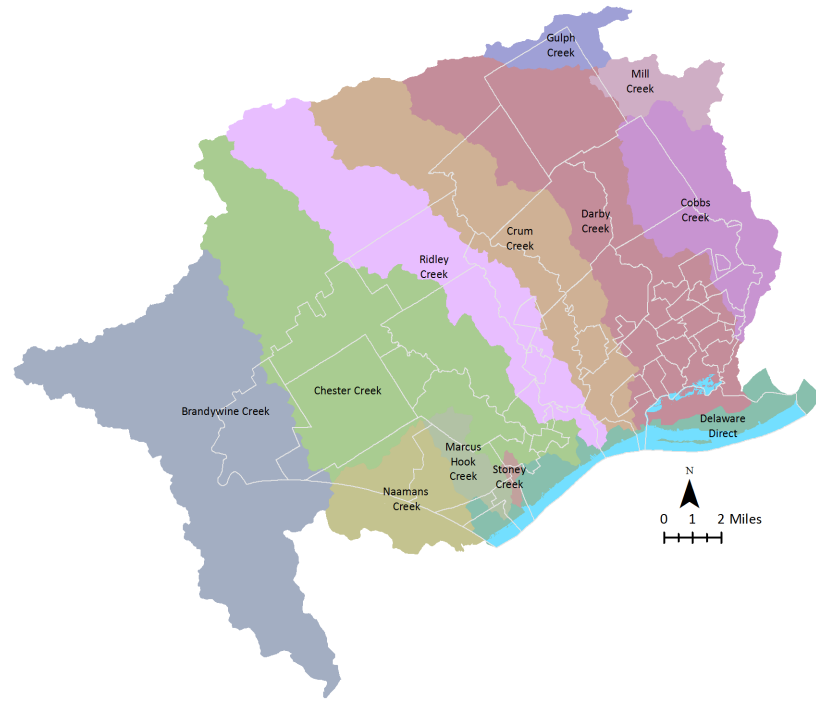


Surface Waters

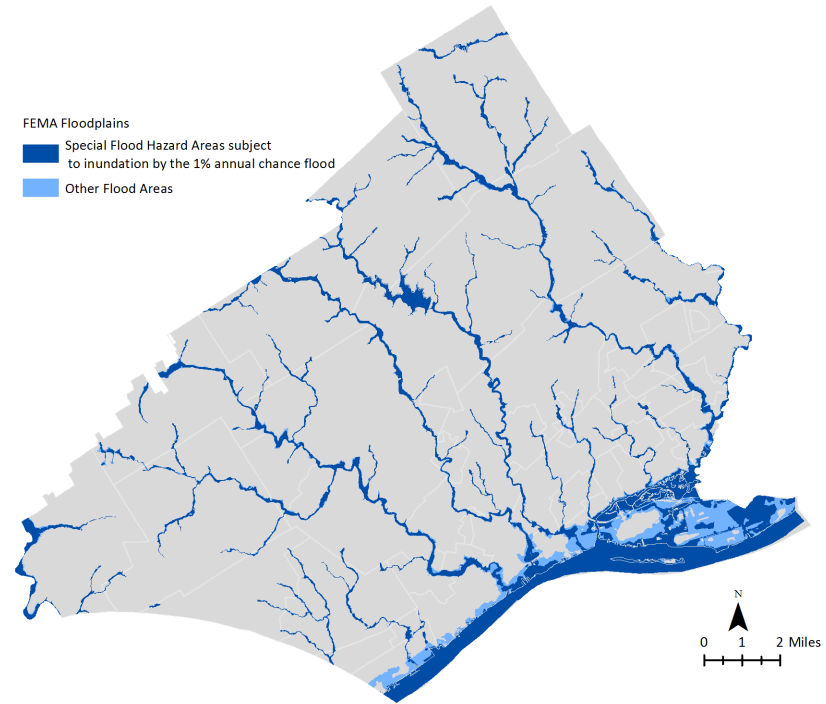


OPEN SPACE, RECREATION, AND GREENWAY PLAN

WATER FEATURES



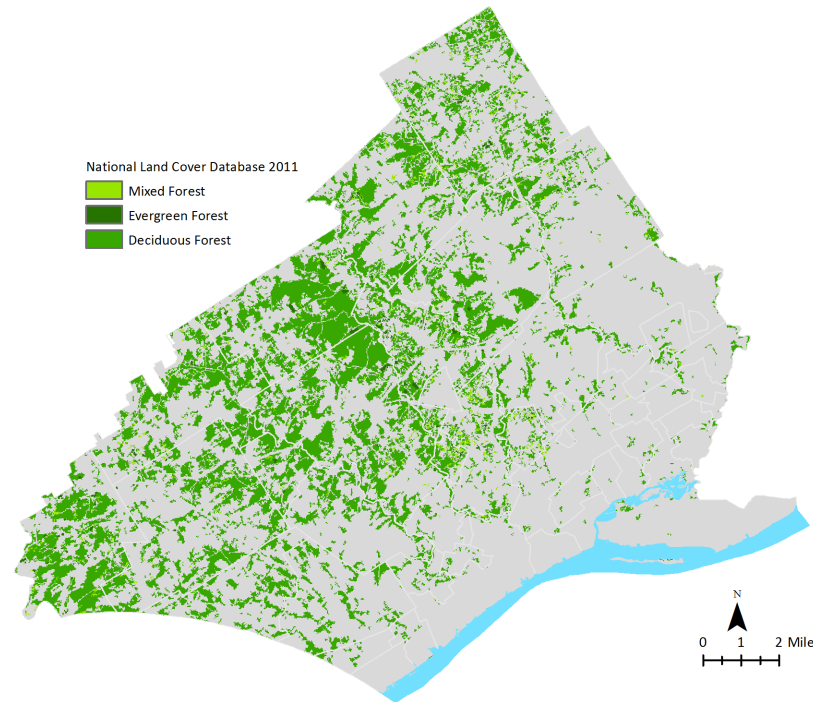
Watersheds



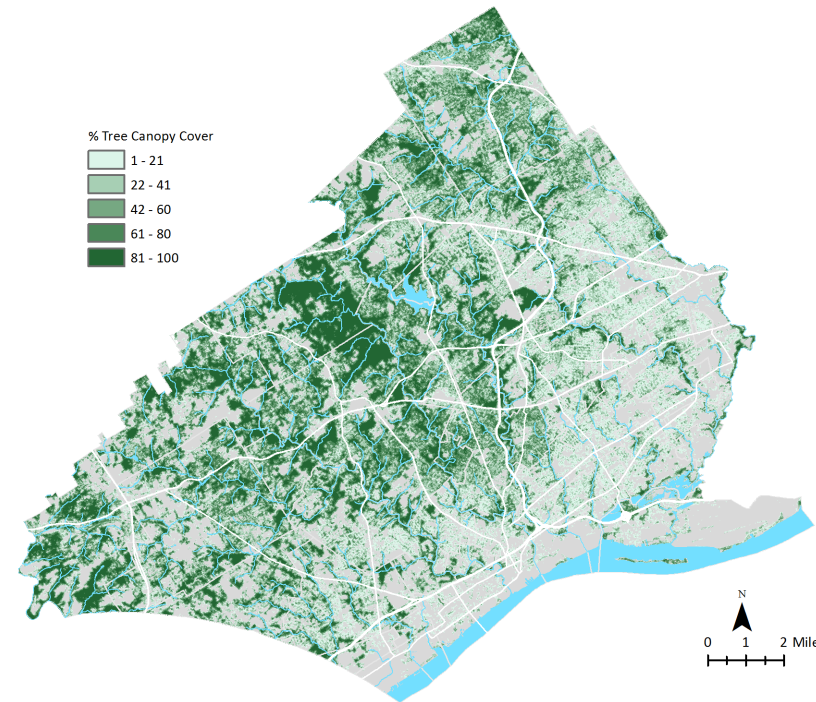
Floodplains

OPEN SPACE, RECREATION, AND GREENWAY PLAN

WOODLAND & TREE CANOPY



Land Cover



% Tree Canopy Cover

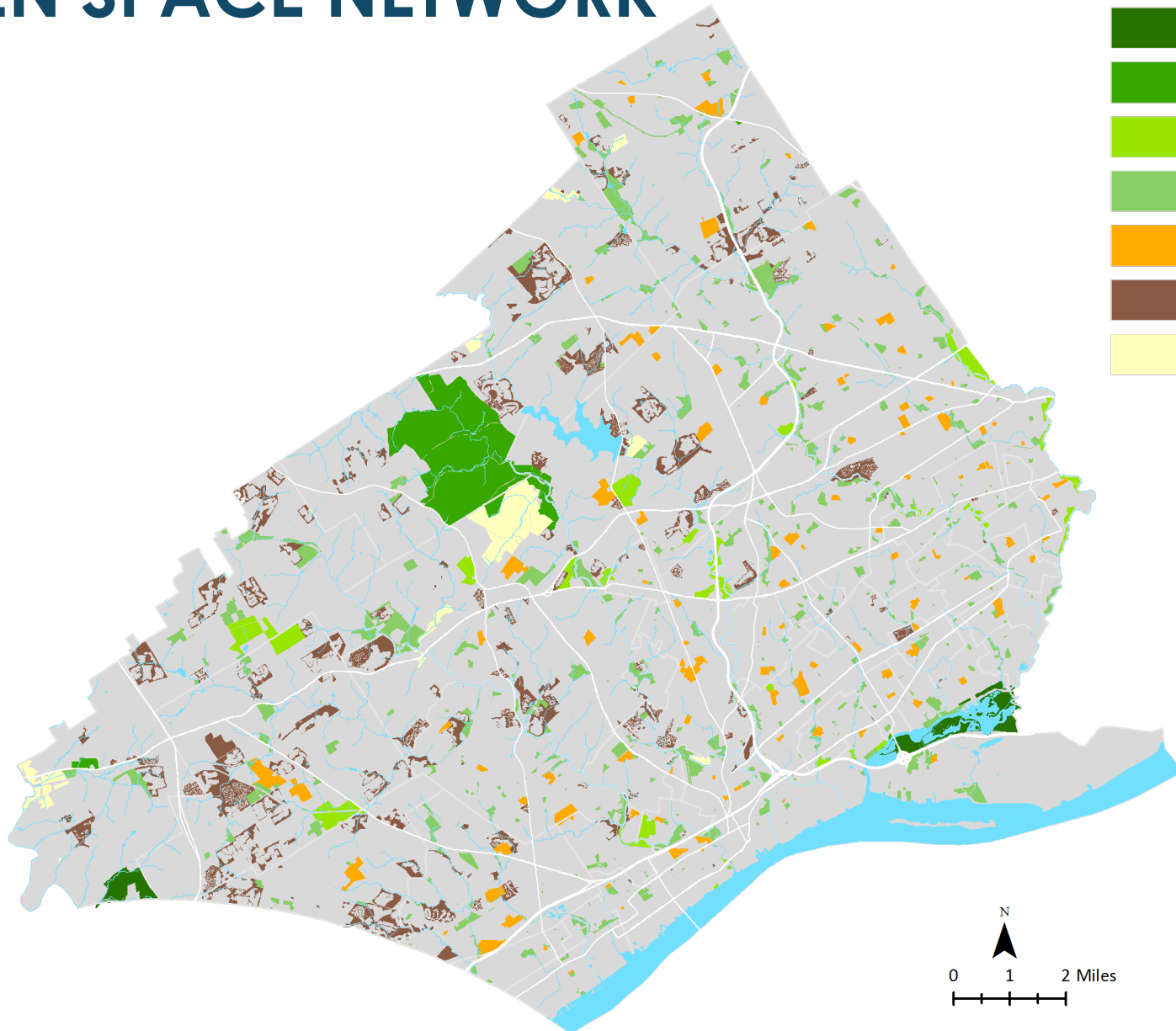
OPEN SPACE, RECREATION, AND GREENWAY PLAN

NATURAL FEATURES OBJECTIVE & ACTIONS (OS 1)

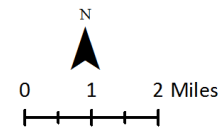
Open Space 1	Recognize the importance of Delaware County's natural features as resources to be conserved and enhanced.
<i>Delaware County will...</i>	
OS 1.1	Raise awareness on the part of municipal officials and residents on the importance of conserving natural features and resources.
OS 1.2	Promote the use of conservation design principles in new land developments.
OS 1.3	Provide technical assistance to municipalities in conserving and enhancing natural features.
OS 1.4	Install and enhance riparian buffers on County-owned properties.
OS 1.5	Provide technical assistance to municipalities in increasing tree canopy coverage.
<i>Municipalities are encouraged to...</i>	
OS 1.6	Identify significant natural feature areas for conservation.
OS 1.7	Coordinate educational outreach to promote the importance of natural features.
OS 1.8	Adopt ordinances providing protection for the natural features of Delaware County.
OS 1.9	Utilize conservation design practices in municipal zoning and subdivision and land development ordinances.
OS 1.10	Prioritize the protection of Natural Heritage Areas identified in the Natural Heritage Inventory of Delaware County.

OPEN SPACE, RECREATION, AND GREENWAY PLAN

OPEN SPACE NETWORK



-  Federal Park
-  State Park
-  County Owned Land
-  Municipal Owned Land
-  School District Open Space and Recreation
-  Homeowner's Association Open Space
-  Conservation Organization Protected Lands



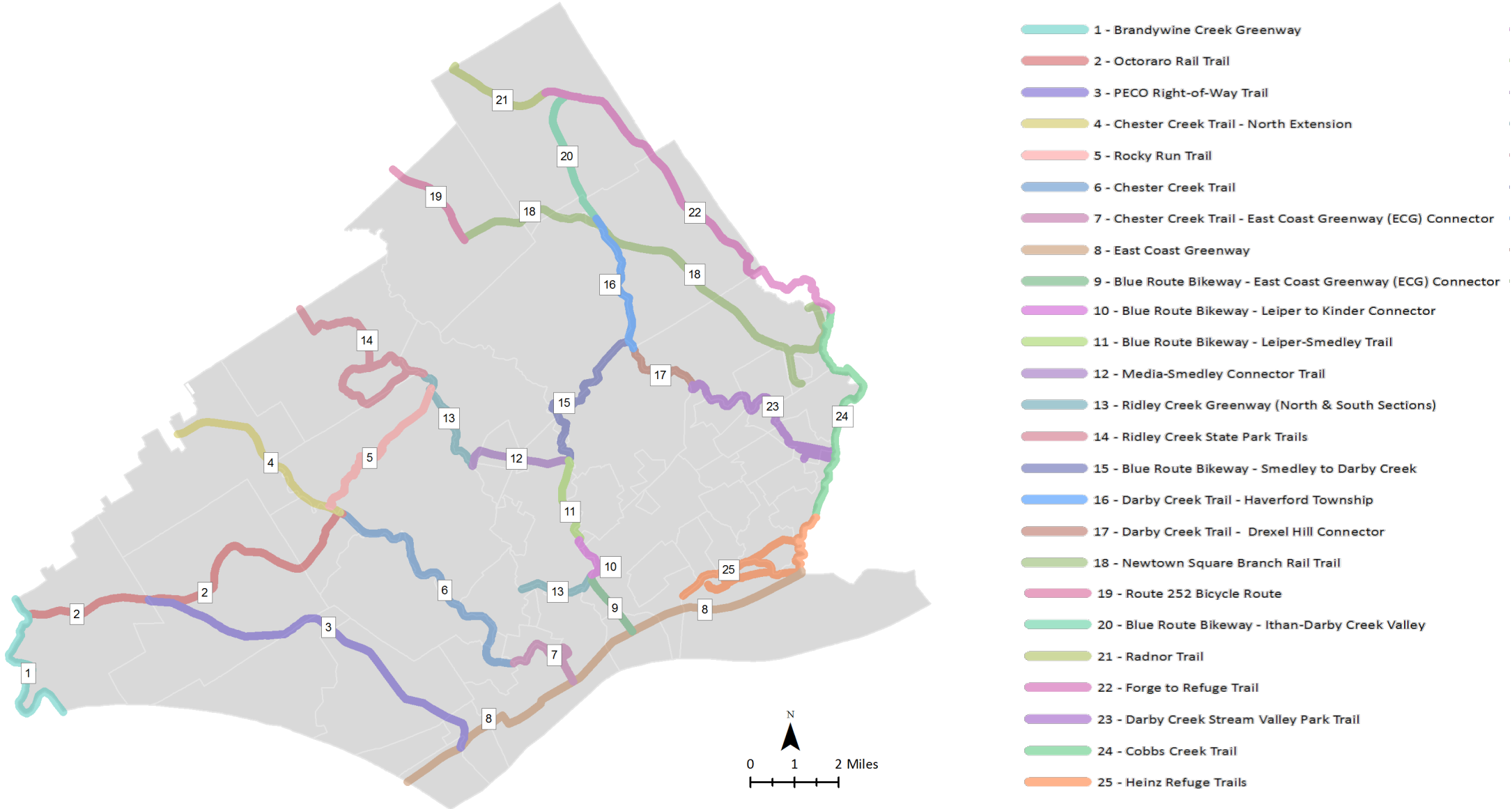
OPEN SPACE, RECREATION, AND GREENWAY PLAN

OPEN SPACE NETWORK OBJECTIVE & ACTIONS (OS 2)

Open Space 2	Identify, enhance, and expand Delaware County's open space network in order to serve the needs of the public.
<i>Delaware County will...</i>	
OS 2.1	Promote and support the use and ease of access to large state and national parks and open space in the County.
OS 2.2	Further investigate opportunities for enhancing County-owned open space and facilities.
OS 2.3	Provide technical assistance to municipalities in identifying open space needs and opportunities.
OS 2.4	Provide technical assistance to communities in developing pocket parks.
OS 2.5	Support farming and agriculture, including urban agriculture, in the County.
<i>Municipalities are encouraged to...</i>	
OS 2.6	Identify opportunities for enhancing municipal-owned open space.
OS 2.7	Identify specific open space needs and opportunities.
OS 2.8	Plan for the protection of open space.
OS 2.9	Engage quasi-public and private land owners in open space and greenway conservation, planning, and outreach activities.
OS 2.10	Coordinate with adjacent municipalities and agencies to provide access to parks across boundaries.

OPEN SPACE, RECREATION, AND GREENWAY PLAN

COUNTYWIDE PRIMARY TRAIL NETWORK



OPEN SPACE, RECREATION, AND GREENWAY PLAN

TRAILS OBJECTIVE & ACTIONS (OS 3)

Open Space 3	Create a Countywide trail network that enhances quality of life by connecting people and places
<i>Delaware County will...</i>	
OS 3.1	Study, plan for, and promote the development of Countywide Primary Trails.
OS 3.2	Work with municipalities to inventory existing trails and produce a user-friendly trail guide.
OS 3.3	Coordinate multi-municipal trail planning efforts with local governments.
OS 3.4	Coordinate with the regional trail efforts outlined in the Circuit.
OS 3.5	Identify potential bicycle and pedestrian connections between existing trails and the County's parks system.
OS 3.6	Identify and suggest potential local connections between linear open spaces.
OS 3.7	Provide technical assistance to municipalities in identifying potential bicycle and pedestrian connections to existing trails and public open spaces.
OS 3.8	Implement planned trails when, where, and to the degree appropriate.
<i>Municipalities are encouraged to...</i>	
OS 3.9	Further study and plan for development of municipal trail networks.
OS 3.10	Inventory existing trails and provide information concerning trails to the public in a user-friendly format.
OS 3.11	Identify pedestrian and bicycle connections between public open spaces and recreational sites within their jurisdictions.
OS 3.12	Coordinate with adjacent municipalities to provide for linear linkages between neighboring municipal open space and trail systems.
OS 3.13	Identify potential bicycle and pedestrian connections to Primary and regional trails.

OPEN SPACE, RECREATION, AND GREENWAY PLAN

GREENWAY NETWORK OBJECTIVE & ACTIONS (GW 1)

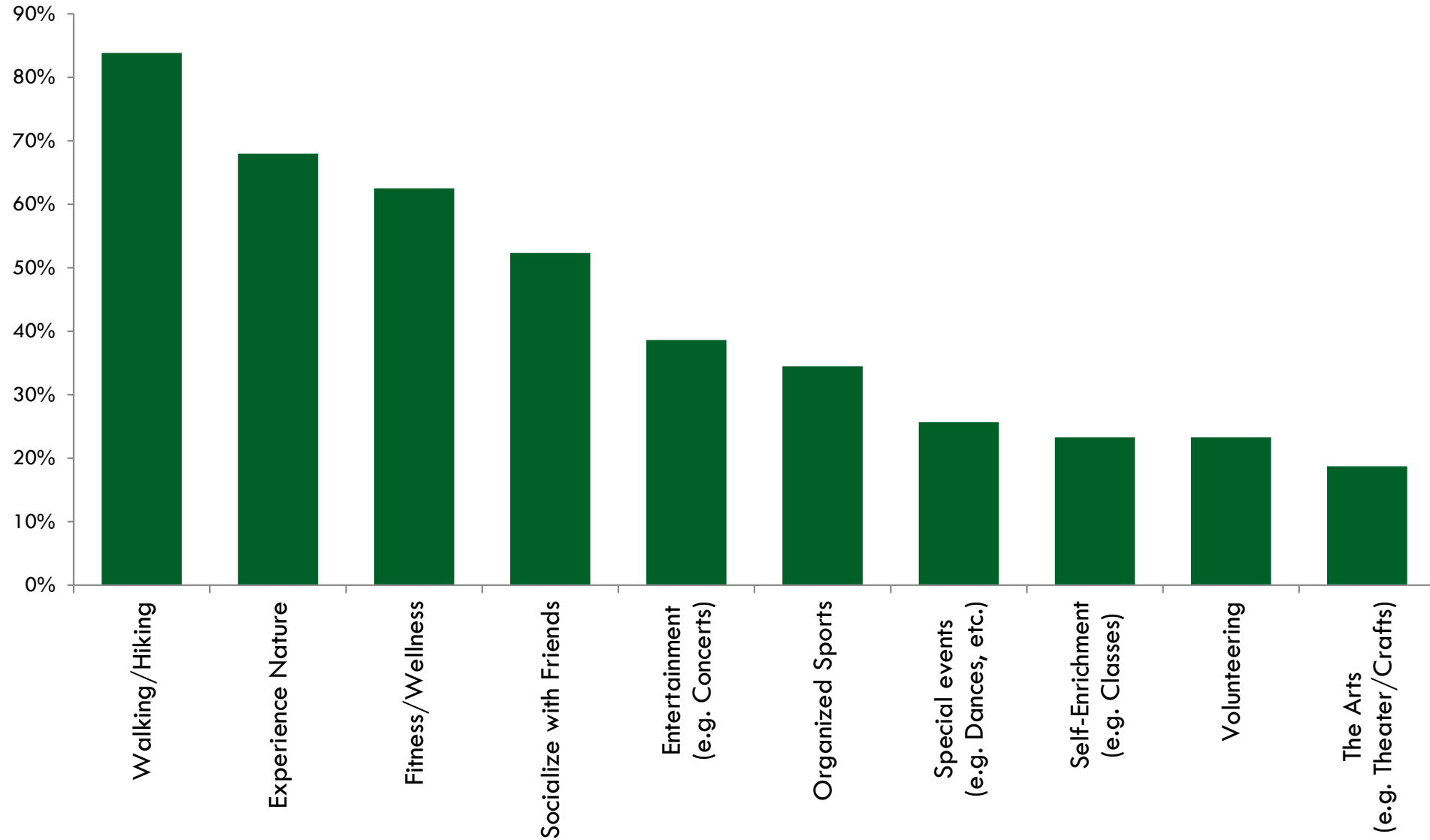
Greenway 1	Create a countywide greenway network that connects Delaware County's environmental, recreational, and cultural resources.
<i>Delaware County will...</i>	
GW 1.1	Provide leadership and coordination for the planning and development of the Countywide Primary Trail Network.
GW 1.2	Organize a Greenway Network Committee to oversee the implementation of the Countywide Greenway Plan.
GW 1.3	Identify priority segments of the Primary Trail Network and responsibilities for key stakeholders.
GW 1.4	Provide technical assistance to municipalities for implementing the Greenway Network
GW 1.5	Develop a marketing plan for the Greenway Network (website, graphics, and other materials)
GW 1.6	Encourage development of trails in the County.
GW 1.7	Implement planned trails when, where, and to the degree appropriate.
GW 1.8	Coordinate Greenway Network implementation efforts with regional partners.
GW 1.9	Support and encourage greenway oriented projects which implement actions defined in state approved rivers conservation plans for the County's watersheds.
GW 1.10	Develop a public education program that focuses on the importance of greenways, their benefits, opportunities, and stewardship.
GW 1.11	Promote the maintenance and/or restoration of vegetated riparian buffers along streams in the County.
GW 1.12	Maintain and/or restore vegetated riparian buffers along streams in County properties.
GW 1.13	Develop and install identification, direction and interpretive signage, as appropriate, to implement the Greenway Plan.

GREENWAY NETWORK OBJECTIVE & ACTIONS (GW 1) - continued

Greenway 1	Create a countywide greenway network that connects Delaware County's environmental, recreational, and cultural resources.
<i>Municipalities are encouraged to...</i>	
GW 1.14	Prepare and implement municipal or multi-municipal greenway and trail network plans.
GW 1.15	Plan for and develop a local trail network that prioritizes implementation of Countywide Primary Trails.
GW 1.16	Use recommended Prioritization Criteria from the Countywide Open Space, Recreation, and Greenway Plan when developing municipal trails.
GW 1.17	Protect, maintain, and/or restore vegetated riparian buffers within conservation greenways.
GW 1.18	Develop and install identification, direction and interpretive signage, as appropriate, to implement the Greenway Plan.
GW 1.19	Review and adopt local ordinances and planning documents to encourage implementation of the Greenway Network.
GW 1.20	Work with large property owners along greenway corridors (i.e., schools, cemeteries, golf courses, etc.) to foster and encourage proper stewardship of their land.

OPEN SPACE, RECREATION, AND GREENWAY PLAN

Survey: Experiences Desired in Parks or Recreation Areas



RECREATION OBJECTIVE & ACTIONS (OS 4)

Open Space 4	Enhance and expand access to recreational programs for all ages and abilities.
<i>Delaware County will...</i>	
OS 4.1	Provide technical assistance to municipalities in developing their recreational programs.
OS 4.2	Convene parks and recreation officials from across the County to facilitate coordination of recreation programs.
<i>Municipalities are encouraged to...</i>	
OS 4.3	Prepare municipal open space and recreation plans to identify facilities and programs for all ages and abilities.
OS 4.4	Coordinate recreation programs with surrounding municipalities.
OS 4.5	Work with other recreation providers (i.e., athletic clubs, school districts, and commercial providers) to satisfy community recreation needs.
OS 4.6	Enhance and expand local recreation programming.

OPEN SPACE, RECREATION, AND GREENWAY PLAN

GREEN DEVELOPMENT / REDEVELOPMENT & LAND STEWARDSHIP

Natural Land Stewardship



Reforestation



Land Reuse



Green Streets



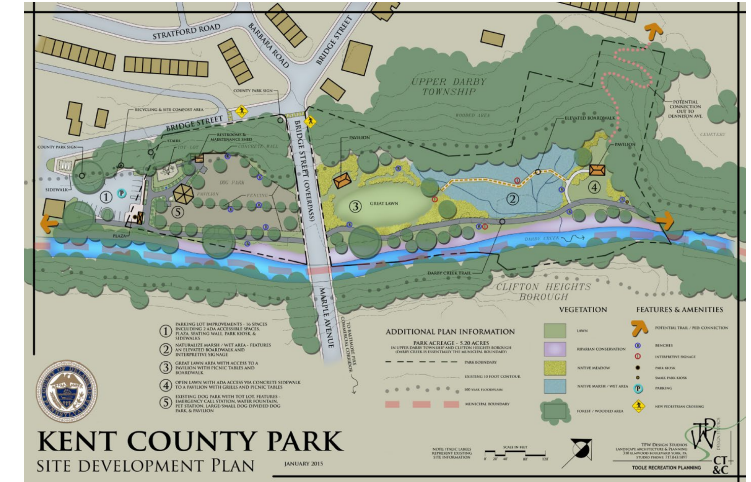
OPEN SPACE, RECREATION, AND GREENWAY PLAN

IMPLEMENTATION OBJECTIVE & ACTIONS (OS 5)

Open Space 5	Implement the actions of the Open Space, Recreation, and Greenway Plan to conserve, enhance, and connect the County's open space network.
<i>Delaware County will...</i>	
OS 5.1	Provide technical assistance to municipalities in developing municipal comprehensive and open space plans.
OS 5.2	Provide technical assistance to municipalities in identifying parcels for open space acquisition.
OS 5.3	Steward County-owned lands to conserve and enhance the natural features.
OS 5.4	Provide technical assistance to municipalities in developing green streets programs.
OS 5.5	Use the Countywide Greenway Plan (Volume II) to develop a countywide network of trails and open space.
OS 5.6	Use the County Parks and Recreation Plan (Volume III) to guide future decision making for recreational programs and facilities for County Parks.
<i>Municipalities are encouraged to...</i>	
OS 5.7	Adopt zoning and subdivision and land development ordinances which protect sensitive natural features.
OS 5.8	Promote private landowner conservation through incentive programs and easements.
OS 5.9	Steward municipally-owned lands to conserve and enhance the natural features.
OS 5.10	Use the Countywide Greenway Plan to help prioritize and plan municipal greenway networks in order to link to adjacent municipalities and help contribute to a countywide greenway network.

OPEN SPACE, RECREATION, AND GREENWAY PLAN

COUNTY PARKS MASTER PLANS



OPEN SPACE, RECREATION, AND GREENWAY PLAN

COUNTY PARK SYSTEM OBJECTIVE & ACTIONS (CP 1)

County Parks 1	Maintain a County park system that contains county-scale parks, and offers facilities, services, and programs that attract countywide interest and participation.
<i>Delaware County will...</i>	
CP 1.1	Examine the organizational structure and mission statement of the County Parks and Recreation Department.
CP 1.2	Periodically examine the full and abbreviated versions of the County Park Rules and Regulations, and revise if needed and necessary.
CP 1.3	Continually examine all County-owned non-recreational open space for its potential to satisfy open space and recreational needs.
CP 1.4	Continue to explore funding opportunities to operate, maintain, and enhance programs and facilities in its parks.
CP 1.5	Explore opportunities to create partnerships with municipalities to operate small County parkland of less than 25 acres.
CP 1.6	Develop a policy to help make and keep the County park system more sustainable and environmentally friendly by employing green infrastructure methods such as meadows, modern stormwater management, and turfgrass management.
CP 1.7	Improve Parks Department communications through a redesigned and expanded Parks website and uniform park signage.
CP 1.8	Add the word “County” to the official name of each park in the Delaware County system.
CP 1.9	Expand County Parks’ recreation and special events programming to additional locations.
CP 1.10	Explore partnering with other citizens groups, organizations and municipalities to increase feasibility of expanding programs.
CP 1.11	Ensure that all proposed facilities in County parks are designed and/or reviewed by persons experienced in landscape architecture.
CP 1.12	Implement the site development drawings and master plans in Volume III.

CONSERVATION PRIORITIZATION CRITERIA

Prioritize conservation of areas that:

- Protect Environmentally Significant Areas
- Preserve the Floodplains
- Protect and/or Restore Natural Stream Banks
- Expand and/or Enhance Existing Protected Open Space
- Protect Important Natural Landscapes
 - E.g., Steep Slopes, Woodlands, Wetlands

*This is an abbreviated selection of the full criteria.

TRAIL PRIORITIZATION CRITERIA

Prioritize trails that:

- Are in the Countywide Primary Trail Network
- Are in the Circuit, Greater Philadelphia's Regional Trail Network
- Are Identified in a Local Trail Network Plan
- Link Significant Destinations
- Connect Segments of Existing Trails

*This is an abbreviated selection of the full criteria.



IMPLEMENTATION EFFORTS

IDENTIFIED IMPLEMENTATION TOOLS

- Green Development and Redevelopment
 - Comprehensive Plan
 - Zoning
 - Subdivision and Land Development Ordinance
 - Official Map
 - Open Space Plan
- Natural Feature Conservation and Regreening
- Landowner Conservation Efforts
- Act 515 and Act 319 (preferential tax assessments)

COUNTY IMPLEMENTATION EFFORTS

- **On-the-Ground Projects**
 - Chester Creek Trail and Darby Creek Trail Development
 - Little Flower Open Space Acquisition
 - Funding Contributions to Municipal Projects
- **Planning and Design**
 - County Park Master Planning (Little Flower)
 - Primary Trails Designs (Chester and Darby Creek Trails) and Feasibility Study (Media-Smedley Trail)
- **Developing Tools**
 - Primary Trail Connectivity Ranking Tool
 - Parks Signage Manual
- **Partnerships**
 - Municipal Assistance, Convening Neighboring Towns
 - County Interdepartmental Partnerships
 - Nonprofit and Stakeholder Groups



CALLS FOR BOLDER
IMPLEMENTATION

OPEN SPACE PLANNING IN DELAWARE COUNTY

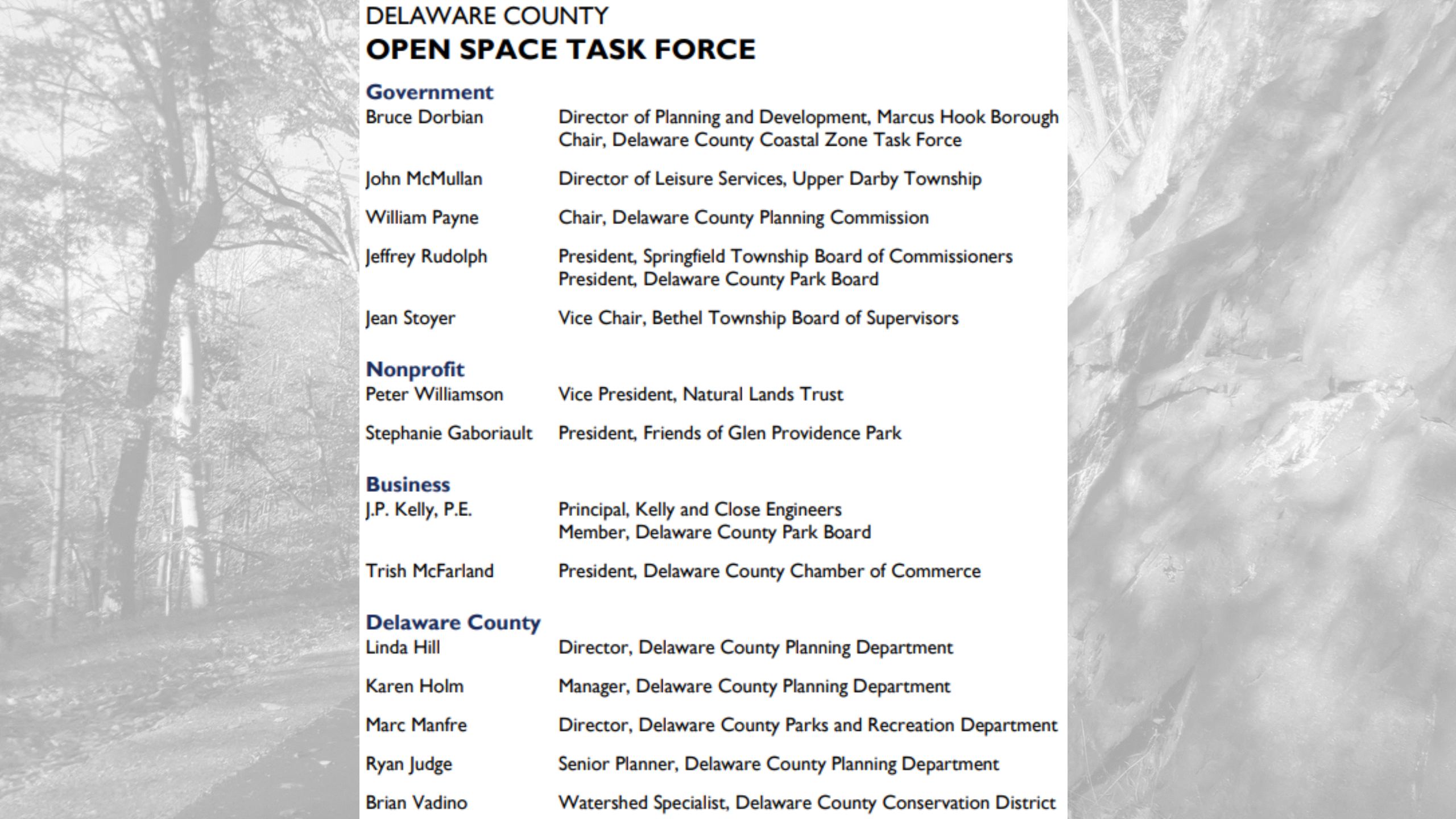
- Statement released July 2016
- Addressed calls from the public for stronger investment in open space
- Called for Open Space Task Force to recommend a strategy to Council to move forward

Open Space Planning in Delaware County

A Statement by Delaware County Council on the
Implementation of the 2015 Open Space, Recreation
and Greenway Plan

One year after the adoption of the Open Space, Recreation and Greenway Plan by Delaware County Council, there exists public discussion about open space planning in our County. After celebrating the County's acquisition of the 37.5 acre Little Flower parcel as the County's 16th County Park, some residents have asked Delaware County to consider the acquisition of the Archdiocese of Philadelphia's 200+ acre parcel on Sproul Road in Marple Township. Others have suggested that Delaware County consider an Open Space Tax Referendum for the authorization of County Debt in amounts of \$100,000,000 to \$125,000,000. This statement addresses those issues.





DELAWARE COUNTY OPEN SPACE TASK FORCE

Government

Bruce Dorbian	Director of Planning and Development, Marcus Hook Borough Chair, Delaware County Coastal Zone Task Force
John McMullan	Director of Leisure Services, Upper Darby Township
William Payne	Chair, Delaware County Planning Commission
Jeffrey Rudolph	President, Springfield Township Board of Commissioners President, Delaware County Park Board
Jean Stoyer	Vice Chair, Bethel Township Board of Supervisors

Nonprofit

Peter Williamson	Vice President, Natural Lands Trust
Stephanie Gaboriault	President, Friends of Glen Providence Park

Business

J.P. Kelly, P.E.	Principal, Kelly and Close Engineers Member, Delaware County Park Board
Trish McFarland	President, Delaware County Chamber of Commerce

Delaware County

Linda Hill	Director, Delaware County Planning Department
Karen Holm	Manager, Delaware County Planning Department
Marc Manfre	Director, Delaware County Parks and Recreation Department
Ryan Judge	Senior Planner, Delaware County Planning Department
Brian Vadino	Watershed Specialist, Delaware County Conservation District

Open Space Task Force: Major Considerations

Existing Funding Programs.

Diverse Municipalities.

Planning and Zoning.

Suburban County Open Space Funds

CHESTER COUNTY

- 1989- \$50 Million Bond (series of voter-approved bond issues)
- 1999- Four-year \$75 Million Fund (Commissioners vote, no referendum)
- 2003- Four-year \$60 Million Bond (Commissioners vote, no referendum)
- 2007- Six-year \$80 Million Bond (Commissioners vote, no referendum)

MONTGOMERY COUNTY

- 1993- Ten-year \$100 Million Bond (Commissioners vote, no referendum)
- 2003- Ten-year \$150 Million Bond (voter-approved bond issue)

BUCKS COUNTY

- 1997- Ten-year \$59 Million Bond
- 2007- Ten-year \$87 Million Bond

DELAWARE COUNTY

- 1996- \$100-million Bond (referendum DID NOT PASS, program not initiated)
- 2018- Three-year \$10 Million Bond (Council vote, no referendum)

Open Space Task Force

What are obstacles to making progress?

Money. Staff time. Consistent level of administrative services.

How can we be creative and proactive?

Make investments to meet goals at the county and municipal level.

**Follow the County Plan.
Plan and work together with neighbors.**

OPEN SPACE TASK FORCE:

OSRGP Recommended Implementation Strategy (Approved 9/12/18 by County Council)

- **Funded by \$10 Million Bond**
(Approved 10/17/18 by County Council)
- Funding for Municipal Projects
Subject to Eligibility Requirements
and 10% Local Match



For more details visit: www.delcopa.gov/planning

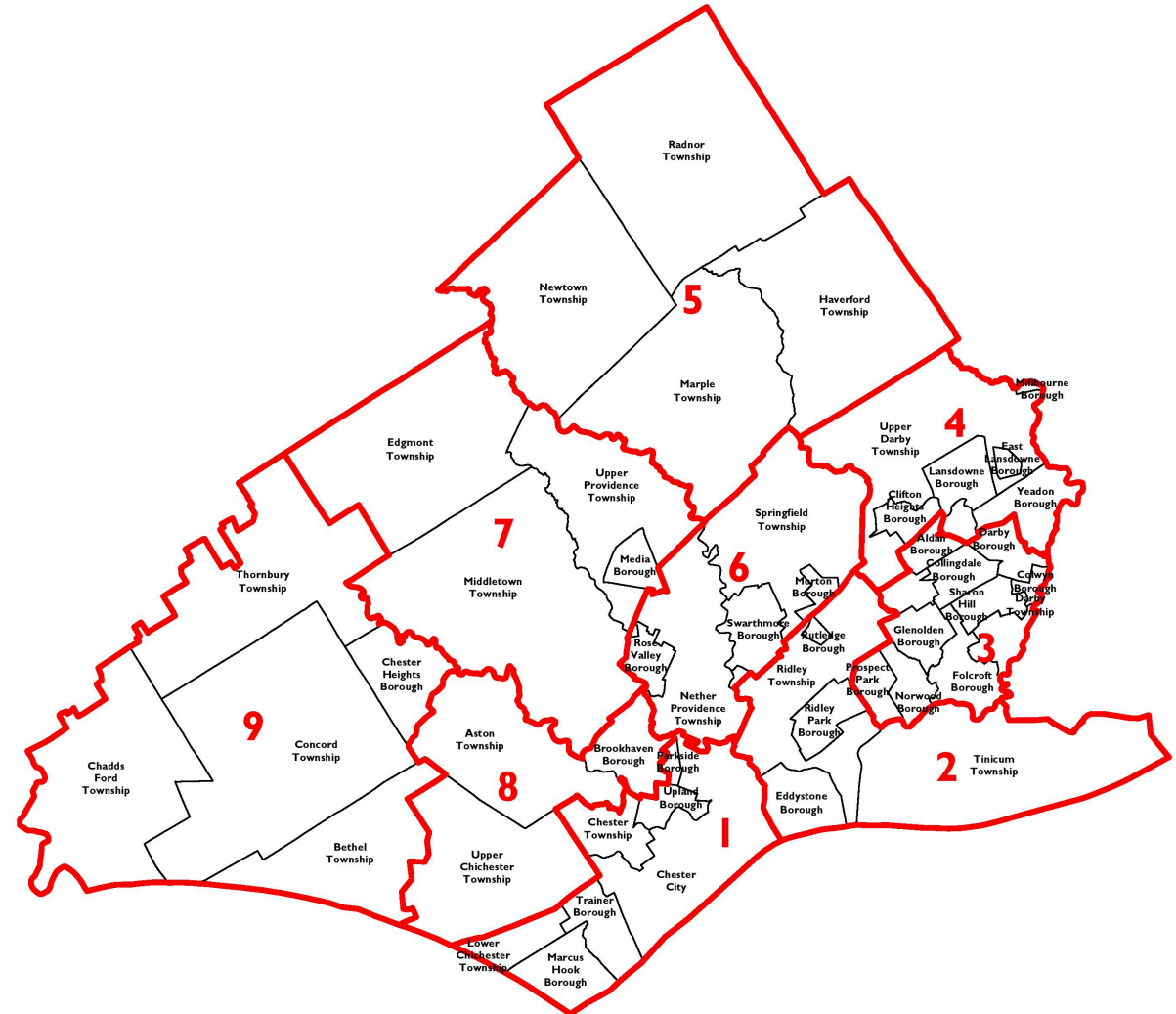
OPEN SPACE TASK FORCE STRATEGY & FUNDING

Investment Categories Include:

- Grants to Municipalities
- Multi-Municipal Open Space Action Plans
- Investment in County-Owned Park System

Eligible Projects:

- Open Space Preservation (CONSERVE),
- Park Development/Regreening (ENHANCE),
- Multi-Use Trails Development (CONNECT)
- Professional Services Support (Plans, Studies, Engineering)



For more details visit: www.delcopa.gov/planning

Round 1 Guidelines and Application

- Announced and Opened 7/10/19 by County Council; Applications due 9/9/19.
- Final Application adapted from model included in Task Force Strategy.
- Surrounding Counties programs' guidelines and applications also used as examples and as templates for application elements.



Round 1 Procedure

- A team of County staff will review grant applications and rank them.
- The team will pass on recommendations to Council.
- Council will announce awards by October 23, 2019.
- Number of grants awarded may be based of strength and number of applications.
- No stated \$ cap for grant round or for each category.



PROJECT TYPES – AWARD AMOUNT LIMITS

1. **Conserve (preservation of open space)**
 - Awards of up to \$500,000, but not more than 25% of the total project costs.
2. **Enhance (capital improvement of parks and public open spaces)**
 - Awards of up to \$100,000, but not more than 25% of the total project costs.
3. **Connect (trail development)**
 - For trails that are part of the County Primary Trail Network (PTN):
 - Awards of up to \$500,000, but not more than 25% of the total project costs.
 - For local, non PTN trails:
 - Awards of up to \$100,000, but not more than 10% of the total project costs.
4. **Professional Services Support (plans, studies, designs, etc.)**
 - Up to \$100,000, but not more than 25% of the total project costs.

*All project types require a local match requirement of at least 10%.

*Amount of the award based on actual project costs, not estimates.

For more details visit: www.delcopa.gov/planning

OTHER AVAILABLE GRANTS FOR MATCH

- PA DCNR
 - Community Conservation Partnerships Program (C2P2)
- PA DCED CFA
 - Greenways, Trails, and Recreation Program (GTRP)
 - Watershed Restoration and Protection Program
- PennDOT
 - Multimodal Transportation Fund (MTF)
 - Transportation Alternatives Program (TAP)
 - Transportation Improvement Program (TIP)
- PA DEP
 - Coastal Resources Management Programs (CZM)
- Other Providers
 - DVRPC Regional Trails Program (RTP)
 - DVRPC Transportation and Community Development Initiative (TCDI)
 - DVRPC Congestion Mitigation Air Quality Improvement Program (CMAQ)
 - PECO Green Region Program



Steven R. Beckley, AICP
Delaware County Planning Department
www.delcopa.gov/planning/currentprojects/DelcoGreenWays.html